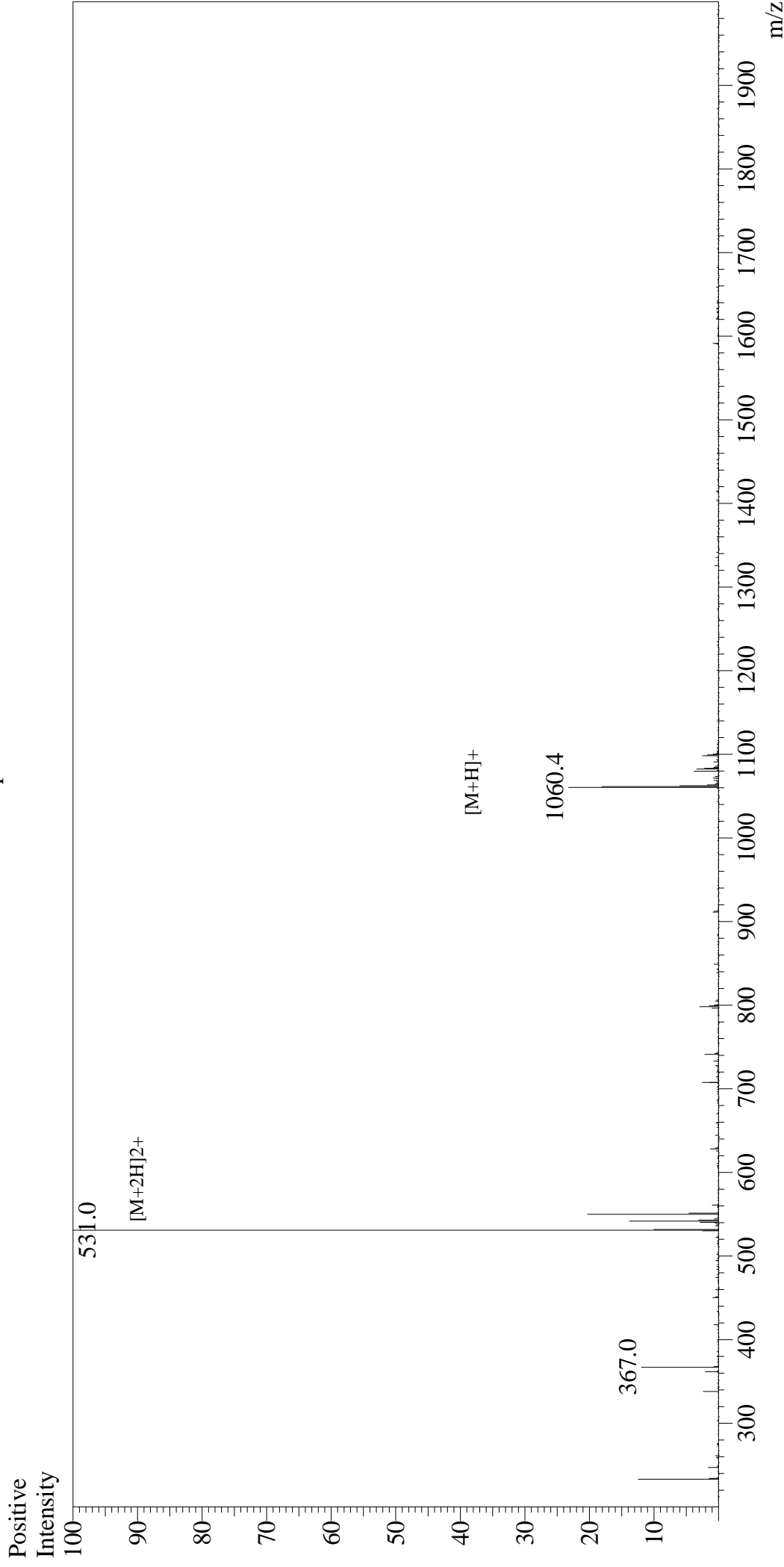


Mass Spectrum



Sample Information

User : Gary
Month-Day Processed : 04/29/20
Time Processed : 20:48:27
Injection Volume : 0.3
Cat No. : RP10008
Lot No. : E6983520D
Theoretical MW : 1060.27
Observed MW : 1060.0

Interface : ESI
Nebulizing Gas Flow : 1.5L/min
CDL Temp : 250
Block Temp : 200

Equipment : GK11010007
Interface Bias : +4.5kV
Drying Gas Flow : 5 L/min
T.Flow : 0.2ml/min
B.conc : 50%H2O/50%MeOH

β -Amyloid (25-35)