

Sample Name : Calcitonin Gene Related Peptide (CGRP) (8-37), human  
 Cat. No. : RP11089  
 Lot. No. : E5798420C  
 Time Processed : 10:24:38  
 Month-Day-Year Processed : 03/27/2020

Pump A : 0.065% trifluoroacetic in 100% water (v/v)  
 Pump B : 0.05% trifluoroacetic in 100% acetonitrile (v/v)  
 Total Flow: 1 ml/min  
 Wavelength: 220 nm

Time	Unit	Command	Value	Comment
0.01	Pumps	Pump A B.Conc	5	
25.00	Pumps	Pump A B.Conc	65	
25.01	Pumps	Pump A B.Conc	95	
27.00	Pumps	Pump A B.Conc	95	
27.01	Pumps	Pump A B.Conc	5	
35.00	Pumps	Pump A B.Conc	5	
35.00	Controller	Stop		

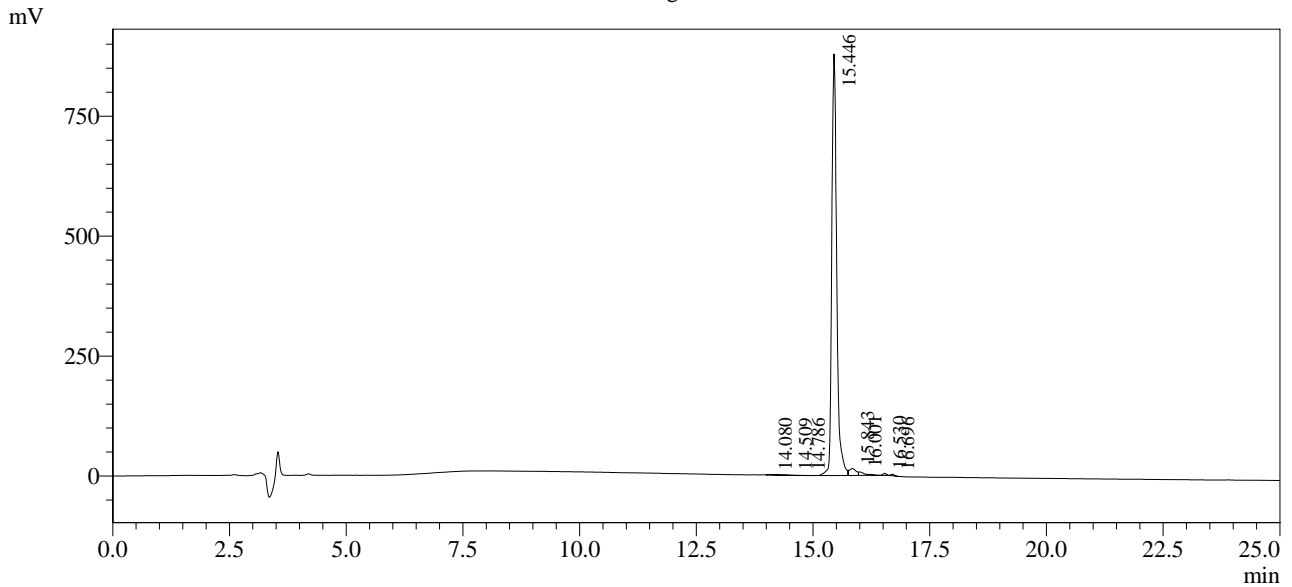
<<Column Performance>>

<Detector A>

Column : Inertsil ODS-3 4.6 x 250 mm

Equipment: SS-CM-0286

Chromatogram



1 Det. A Ch1 / 220nm  
 Detector A Ch1 220nm

Peak#	Ret. Time	Area	Height	Area %
1	14.080	11296	793	0.167
2	14.509	7889	961	0.116
3	14.786	4354	656	0.064
4	15.446	6492498	878583	95.775
5	15.843	150260	14599	2.217
6	16.001	75865	7144	1.119
7	16.530	22996	4378	0.339
8	16.696	13744	2765	0.203
Total		6778903	909879	100.000