

Sample Name : p2Ca
 Cat. No. : RP19988
 Lot. No. : E1399219G
 Time Processed : 1:01:12
 Month-Day-Year Processed : 07/27/2019

Pump A : 0.065% trifluoroacetic in 100% water (v/v)
 Pump B : 0.05% trifluoroacetic in 100% acetonitrile (v/v)
 Total Flow: 1 ml/min
 Wavelength: 220 nm

<<LC Time Program>>

Time	Module	Command	Value
0.01	Pumps	Solvent B Conc.	5
25.00	Pumps	Solvent B Conc.	65
25.01	Pumps	Solvent B Conc.	95
27.00	Pumps	Solvent B Conc.	95
27.01	Pumps	Solvent B Conc.	5
33.00	Pumps	Solvent B Conc.	5
33.01	Controller	Stop	

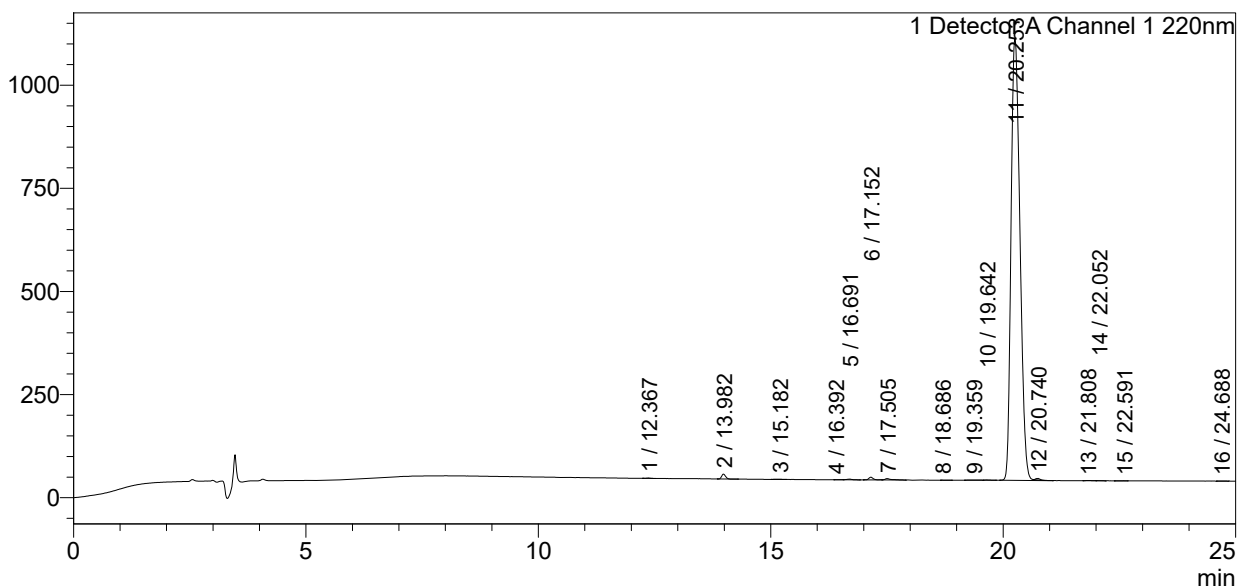
<<Column Performance>>

<Detector A>

Column : Alltima™ C18 4.6 x 250 mm
 Equipment: ZJ17010508

<Chromatogram>

mV



<Peak Table>

Detector A Channel 1 220nm

Peak#	Ret. Time	Area	Height	Area%
1	12.367	4711	820	0.033
2	13.982	71842	11978	0.496
3	15.182	5240	535	0.036
4	16.392	1936	184	0.013
5	16.691	13606	1719	0.094
6	17.152	41974	6462	0.290
7	17.505	30935	3310	0.214
8	18.686	1666	210	0.012
9	19.359	6448	425	0.045
10	19.642	4953	692	0.034
11	20.253	14269284	1071015	98.504
12	20.740	22050	3800	0.152
13	21.808	3109	378	0.021
14	22.052	1598	217	0.011
15	22.591	2598	267	0.018

Peak#	Ret. Time	Area	Height	Area%
16	24.688	4038	418	0.028
Total		14485988	1102430	100.000