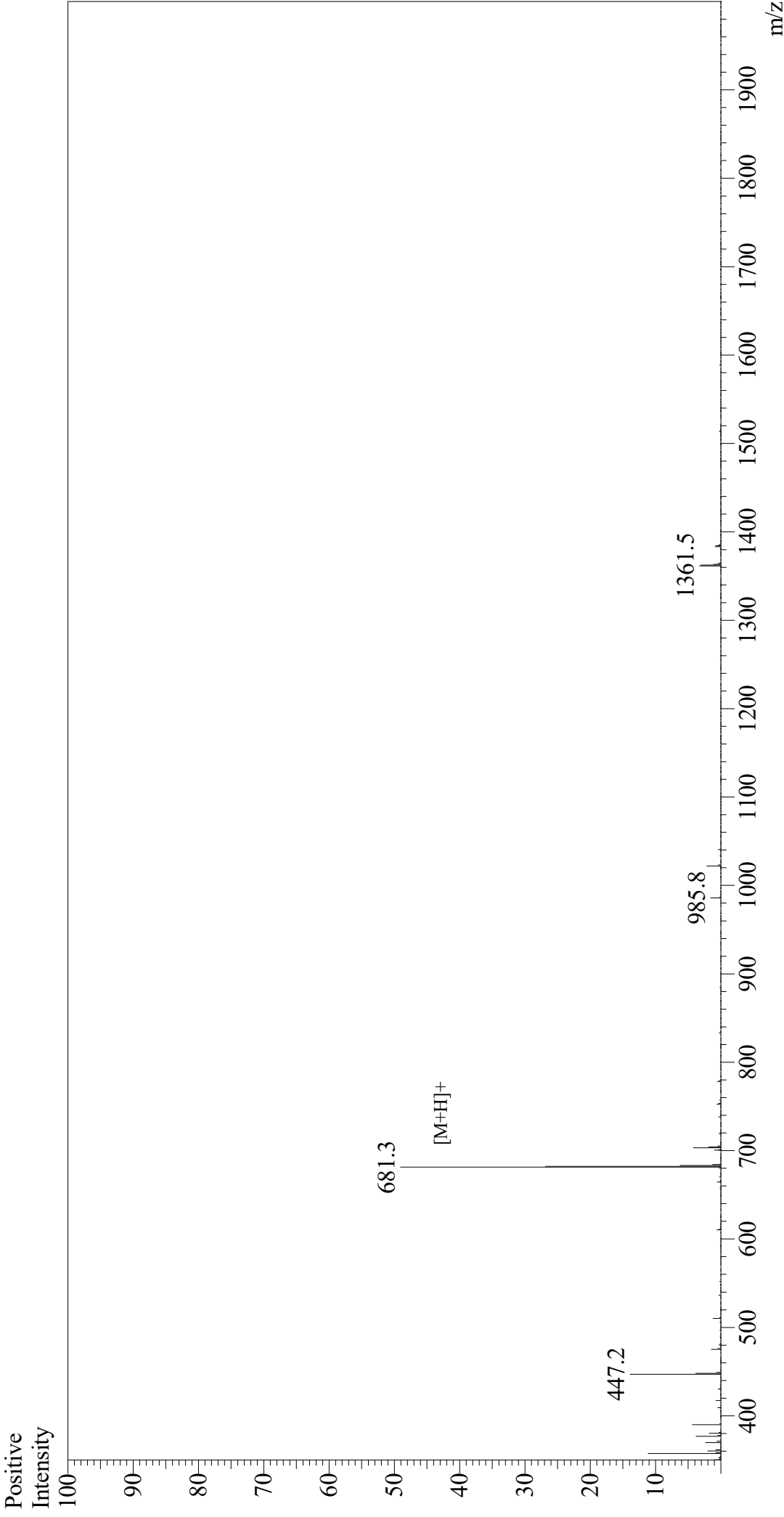


# Mass Spectrum



Sample Information  
Month-Day Processed : 06/29/21  
Time Processed : 23:12:43  
Injection Volume : 0.5  
Sample Name : PAR-4 Agonist Peptide, amide  
Cat No. : RP11529  
Lot No. : E0768721F  
Theoretical MW : 680.80  
Observed MW : 680.3

Interface : ESI  
Nebulizing Gas Flow : 1.5L/min  
CDL Temp : 250  
Block Temp : 200

Equipment : GK11010007  
Interface Bias : +4.5 kV  
Drying Gas Flow : 5 L/min  
T.Flow : 0.2 ml/min  
B.conc : 50% H2O/50% MeOH