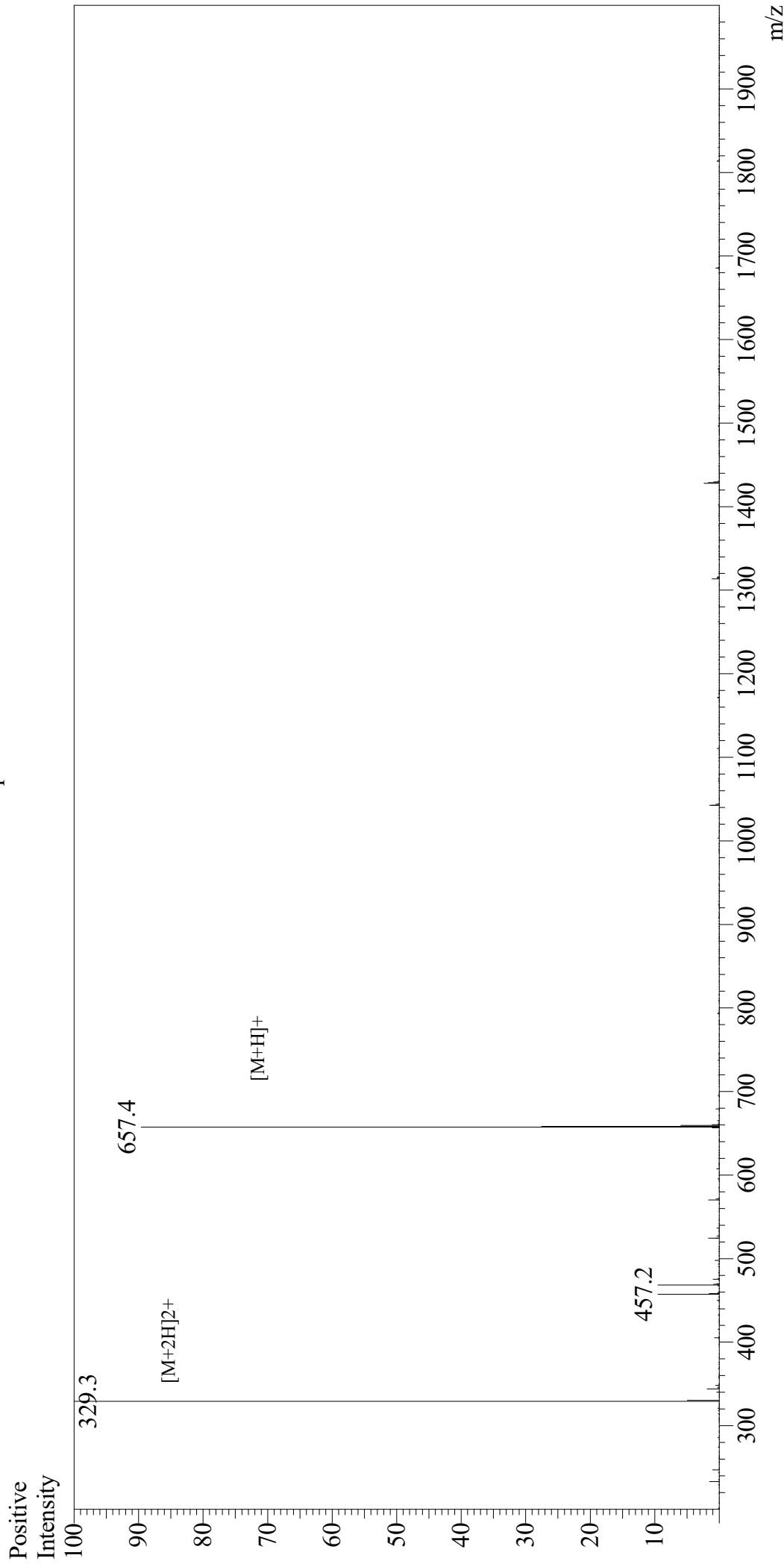


# Mass Spectrum



## Sample Information

User : Gary  
Month-Day Processed : 07/01/20  
Time Processed : 10:16:58 PM  
Injection Volume : 0.3  
Sample Name : Protease-Activated Receptor-2 Activating Peptide  
Cat No. : RP19975  
Lot No. : E1250320G  
Theoretical MW : 656.83  
Observed MW : 656.6

Interface : ESI  
Nebulizing Gas Flow : 1.5L/min  
CDL Temp : 250  
Block Temp : 200

Equipment : GK11010007  
Interface Bias : +4.5kV  
Drying Gas Flow : 5 L/min  
T.Flow : 0.2ml/min  
B.conc : 50%H<sub>2</sub>O/50%MeOH