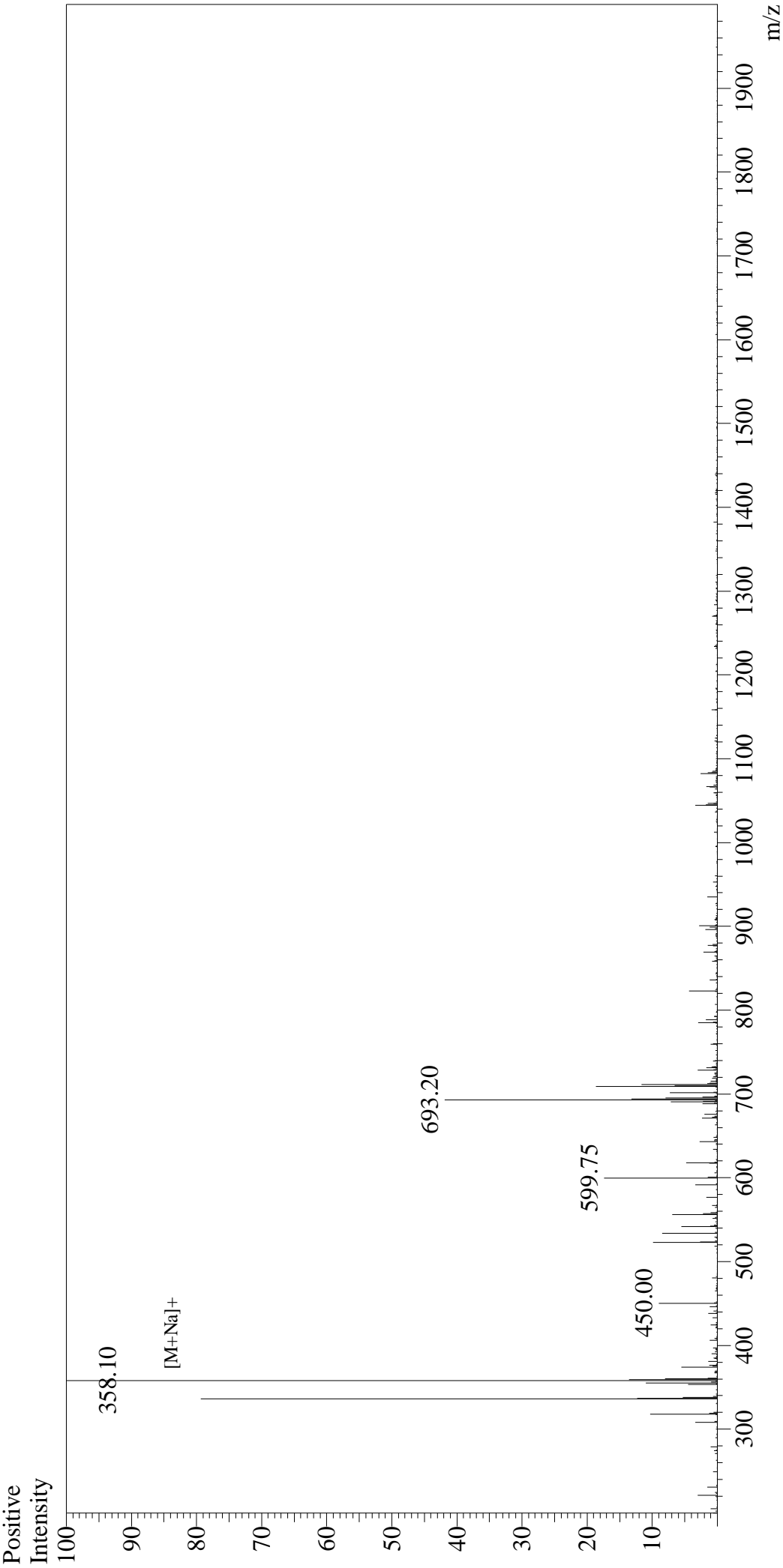


Mass Spectrum



Sample Information

User :	Gary	Interface	:ESI	Interface Bias	:+4.5kV
Month-Day Processed :	10/19/16	Nebulizing Gas Flow	:1.5L/min	Drying Gas Flow	:5 L/min
Time Processed :	14:15:02	CDL Temp	:250°C	T.Flow	:0.2ml/min
Injection Volume :	0.2	Block Temp	:200°C	B.conc	:50%H2O/50%MeOH
Sample Name :	N-Formyl-Met-Ala-Ser				
Cat No. :	RP10587				
Lot No. :	PE5321610				
Theoretical MW :	336.40				
Observed MW :	336.10				