

Sample Name : N-Formyl-Met-Ala-Ser  
 Cat. No. : RP 10587  
 Lot. No. : PE5321610

Pump A : 0.065% trifluoroacetic in 100% water (v/v)  
 Pump B : 0.05% trifluoroacetic in 100% acetonitrile (v/v)  
 Total Flow:1 ml/min  
 Wavelength:220 nm

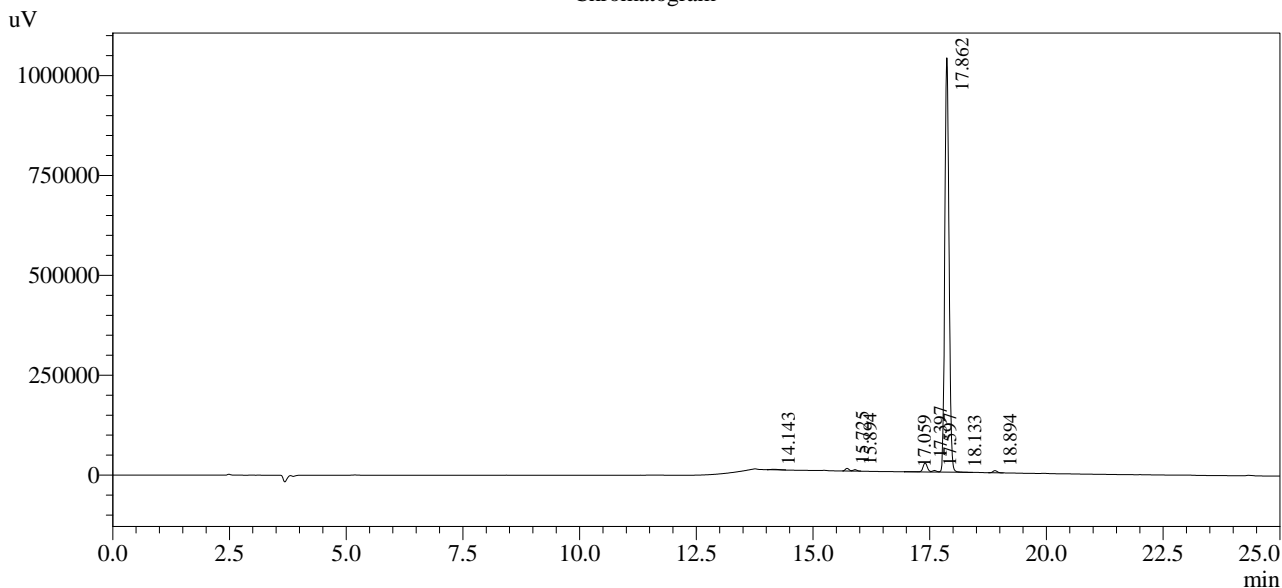
Time	Unit	Command	Value	Comment
0.01	Pumps	Pump A B.Conc	0	
5.00	Pumps	Pump A B.Conc	0	
20.00	Pumps	Pump A B.Conc	30	
25.00	Pumps	Pump A B.Conc	65	
25.01	Pumps	Pump A B.Conc	95	
31.00	Pumps	Pump A B.Conc	95	
31.01	Pumps	Pump A B.Conc	0	
40.00	Pumps	Pump A B.Conc	0	
40.01	Controller	Stop		

<<Column Performance>>

<Detector A>

Column : Alltima™ C18 4.6 x 250 mm

Chromatogram



1 Det.A Ch1 / 220nm

Peak Table

Detector A Ch1 220nm

Peak#	Ret. Time	Area	Height	Area %
1	14.143	14904	1203	0.220
2	15.725	36194	6610	0.533
3	15.894	19765	3494	0.291
4	17.059	2787	221	0.041
5	17.397	143326	22649	2.111
6	17.597	24084	3794	0.355
7	17.862	6509188	1037162	95.873
8	18.133	4169	783	0.061
9	18.894	34958	5575	0.515
Total		6789375	1081493	100.000