

Sample Name :HIF-1 alpha (556-574)  
 Cat No. :RP20479  
 Lot No. :E5630620K  
 Time Processed :7:15:07 PM  
 Month-Day-Year Processed :11/21/2020

Pump A : 0.065% trifluoroacetic in 100% water (v/v)  
 Pump B : 0.05% trifluoroacetic in 100% acetonitrile (v/v)  
 Total Flow:1 ml/min  
 Wavelength:220 nm  
 <<LC Time Program>>

| Time  | Module     | Command | Value |
|-------|------------|---------|-------|
| 0.01  | Pumps      | B.Conc  | 5     |
| 25.00 | Pumps      | B.Conc  | 65    |
| 25.01 | Pumps      | B.Conc  | 95    |
| 27.00 | Pumps      | B.Conc  | 95    |
| 27.01 | Pumps      | B.Conc  | 5     |
| 35.00 | Pumps      | B.Conc  | 5     |
| 35.01 | Controller | Stop    |       |

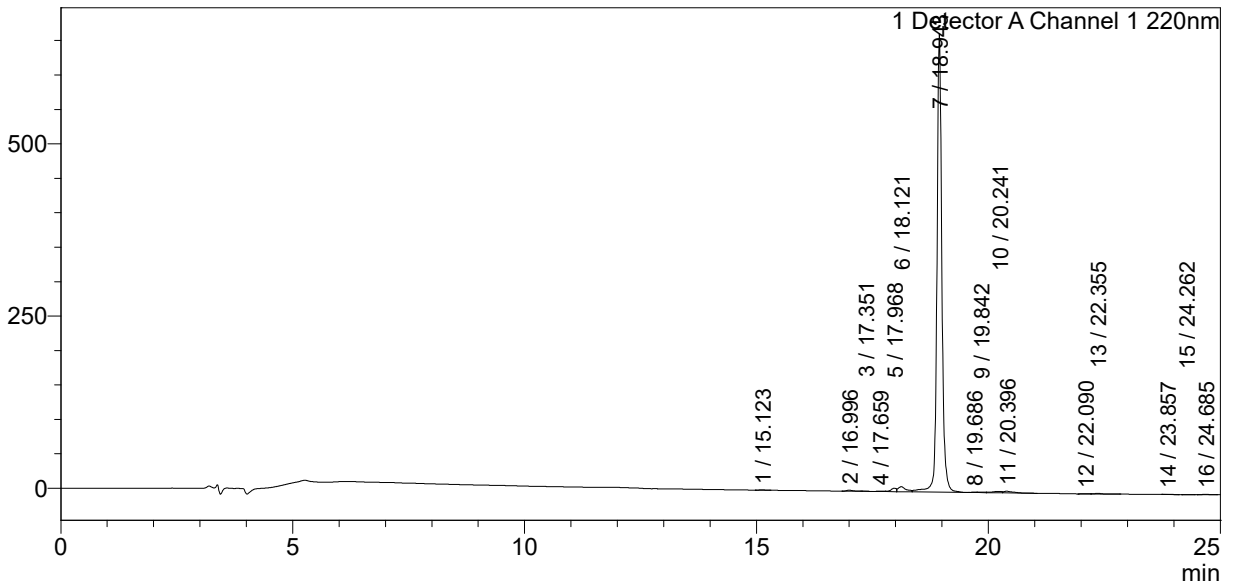
<<Column Performance>>

<Detector A>

Column :Inertsil ODS-3 4.6 x 250 mm  
 Equipment: ZJ19010141

<Chromatogram>

mV



<Peak Table>

Detector A Channel 1 220nm

| Peak# | Ret. Time | Area    | Height | Area%  |
|-------|-----------|---------|--------|--------|
| 1     | 15.123    | 3559    | 443    | 0.069  |
| 2     | 16.996    | 12404   | 1582   | 0.241  |
| 3     | 17.351    | 2217    | 417    | 0.043  |
| 4     | 17.659    | 6109    | 626    | 0.119  |
| 5     | 17.968    | 39517   | 5051   | 0.767  |
| 6     | 18.121    | 85634   | 7326   | 1.662  |
| 7     | 18.943    | 4904350 | 665684 | 95.194 |
| 8     | 19.686    | 4128    | 639    | 0.080  |
| 9     | 19.842    | 8286    | 826    | 0.161  |
| 10    | 20.241    | 29210   | 1869   | 0.567  |
| 11    | 20.396    | 35054   | 2476   | 0.680  |
| 12    | 22.090    | 2309    | 190    | 0.045  |
| 13    | 22.355    | 10846   | 1074   | 0.211  |
| 14    | 23.857    | 1129    | 101    | 0.022  |

| Peak# | Ret. Time | Area    | Height | Area%   |
|-------|-----------|---------|--------|---------|
| 15    | 24.262    | 1087    | 111    | 0.021   |
| 16    | 24.685    | 6123    | 564    | 0.119   |
| Total |           | 5151962 | 688982 | 100.000 |