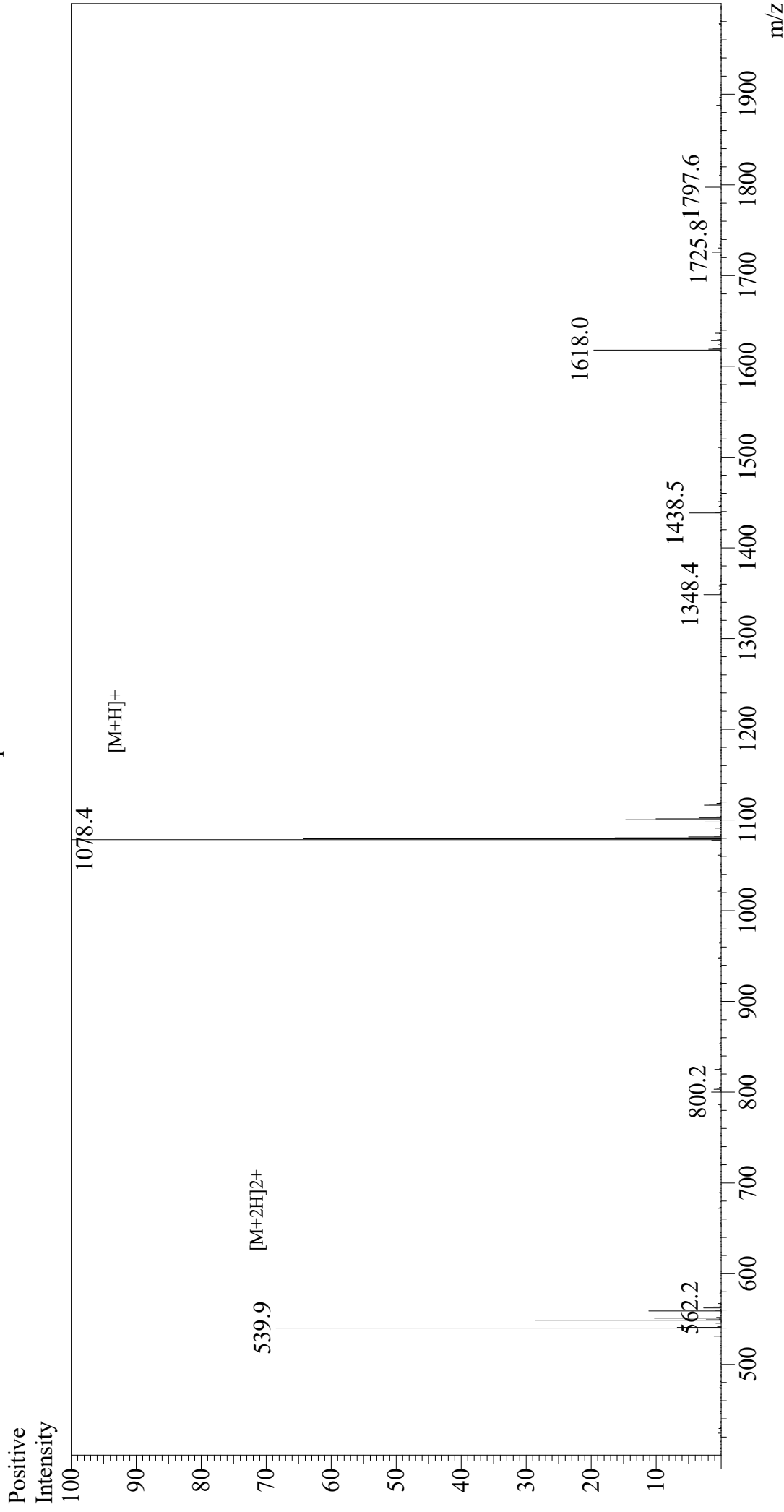


Mass Spectrum



Sample Information

Month-Day Processed : 12/29/20
Time Processed : 8:12:26 PM
Injection Volume : 0.3
Sample Name : NP (396-404)
Cat No : RP20090
Lot No : E2658820L
Theoretical MW : 1078.18
Observed MW : 1077.4

Interface : ESI
Nebulizing Gas Flow : 1.5L/min
CDL Temp : 250
Block Temp : 200

Equipment : GK11010007
Interface Bias : +4.5 kV
Drying Gas Flow : 5 L/min
T.Flow : 0.2 ml/min
B.conc : 50% H2O/50% MeOH