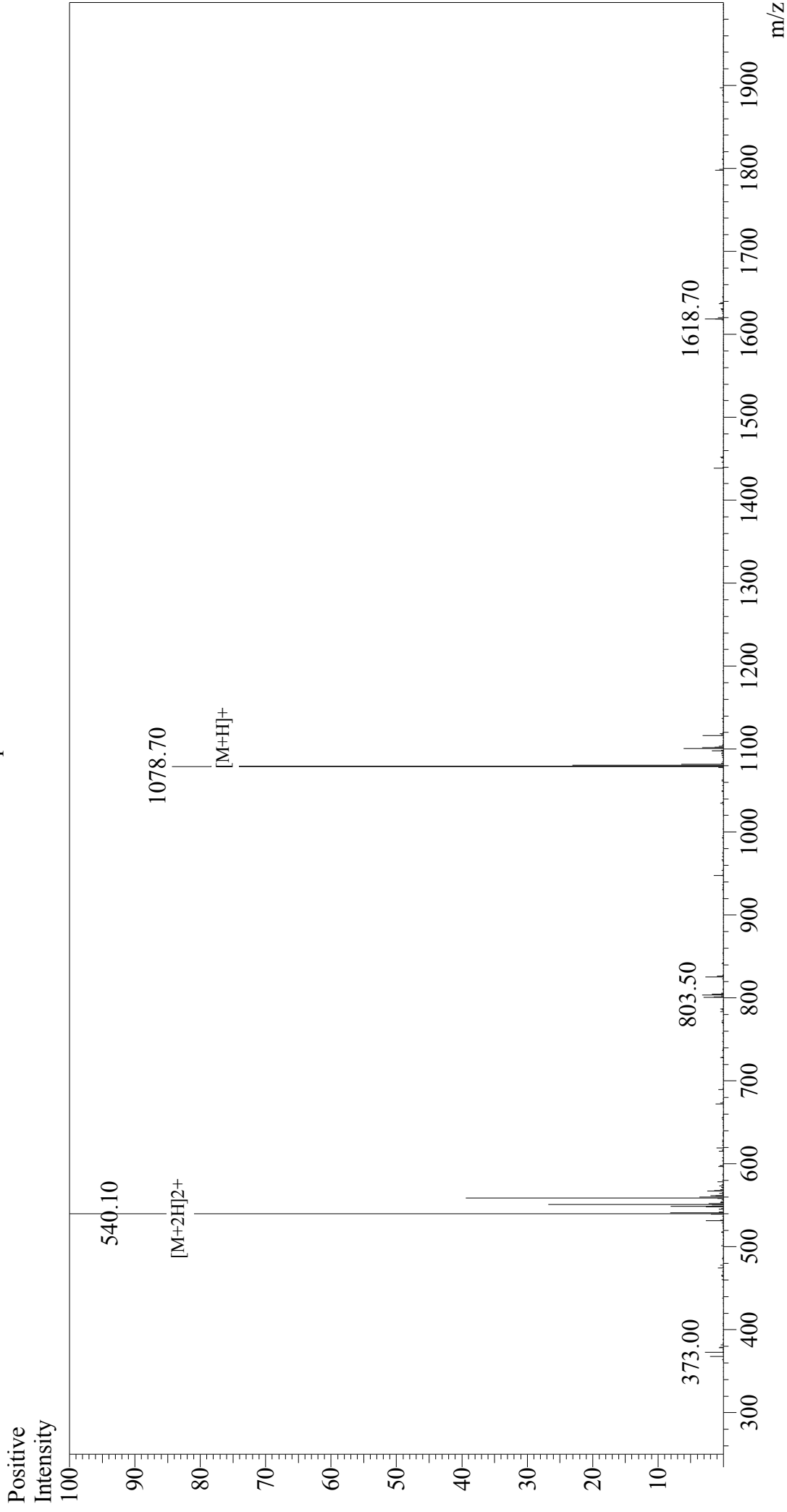


Mass Spectrum



Sample Information

Acquired by : Gary
Month-Day Processed : 11/25/17
Time Processed : 12:02:46
Injection Volume : 0.2
Sample Name : NP (396-404)
Cat. No. : RP20090
Lot. No. : PE7061711
Theoretical MW : 1078.18
Observed MW : 1078.20

Interface : ESI
Nebulizing Gas Flow : 1.5L/min
CDL Temp : 250°C
Block Temp : 200°C

Interface Bias : +4.5 kV
Drying Gas Flow : 5 L/min
T.Flow : 0.2 ml/min
B.conc : 50%_{H2O}/50%_{MeOH}