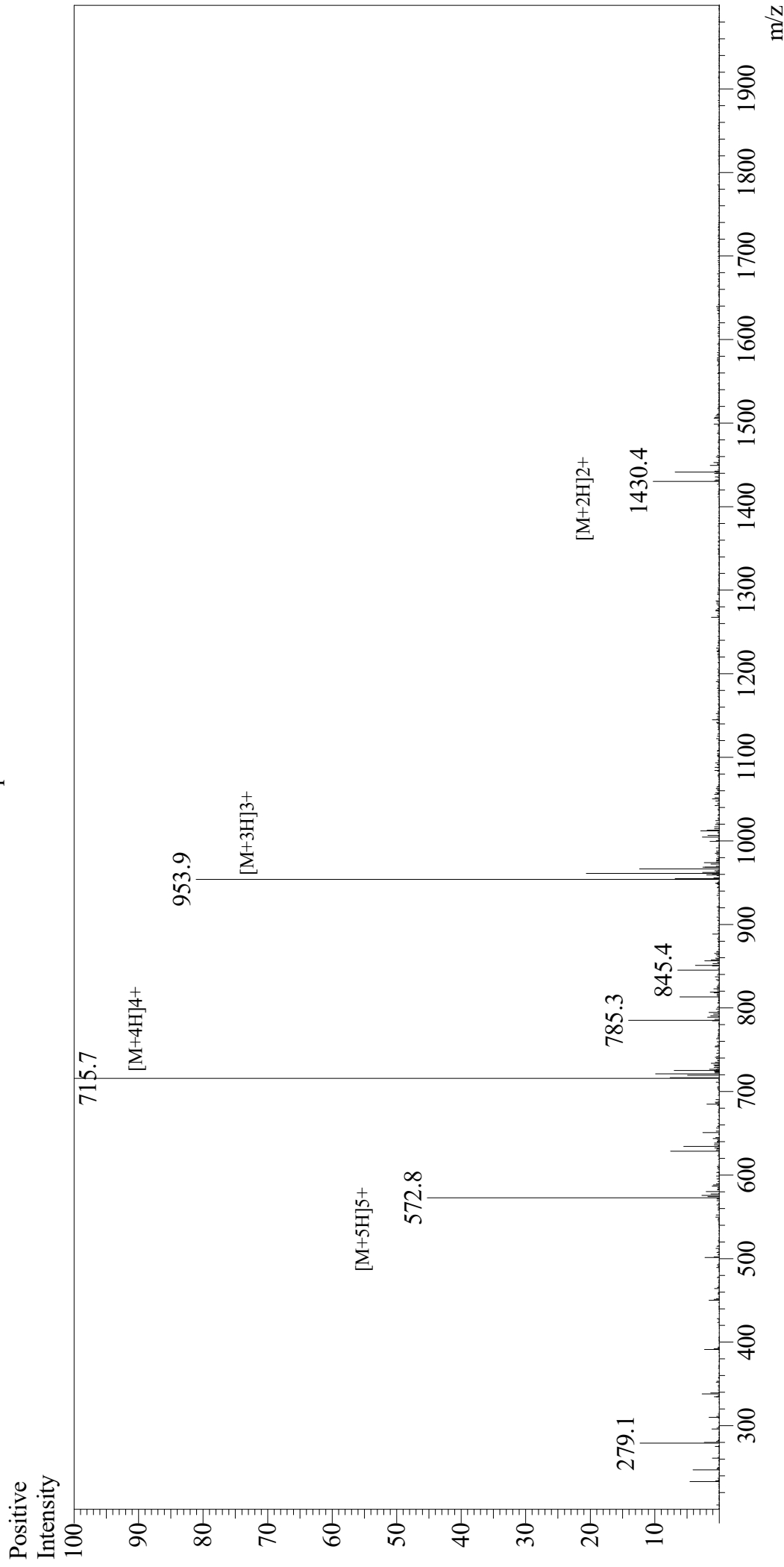


# Mass Spectrum



Sample Information  
Month-Day Processed : 10/13/20  
Time Processed : 7:30:28 AM  
Injection Volume : 0.3  
Sample Name : Gastrin-Releasing Peptide, human  
Cat No. : RP10791  
Lot No. : E5058820J  
Theoretical MW : 2859.30  
Observed MW : 2858.8

Interface : ESI  
Nebulizing Gas Flow : 1.5L/min  
CDL Temp : 250  
Block Temp : 200

Equipment : GK11010007  
Interface Bias : +4.5kV  
Drying Gas Flow : 5 L/min  
T.Flow : 0.2ml/min  
B.conc : 50%H2O/50%MeOH