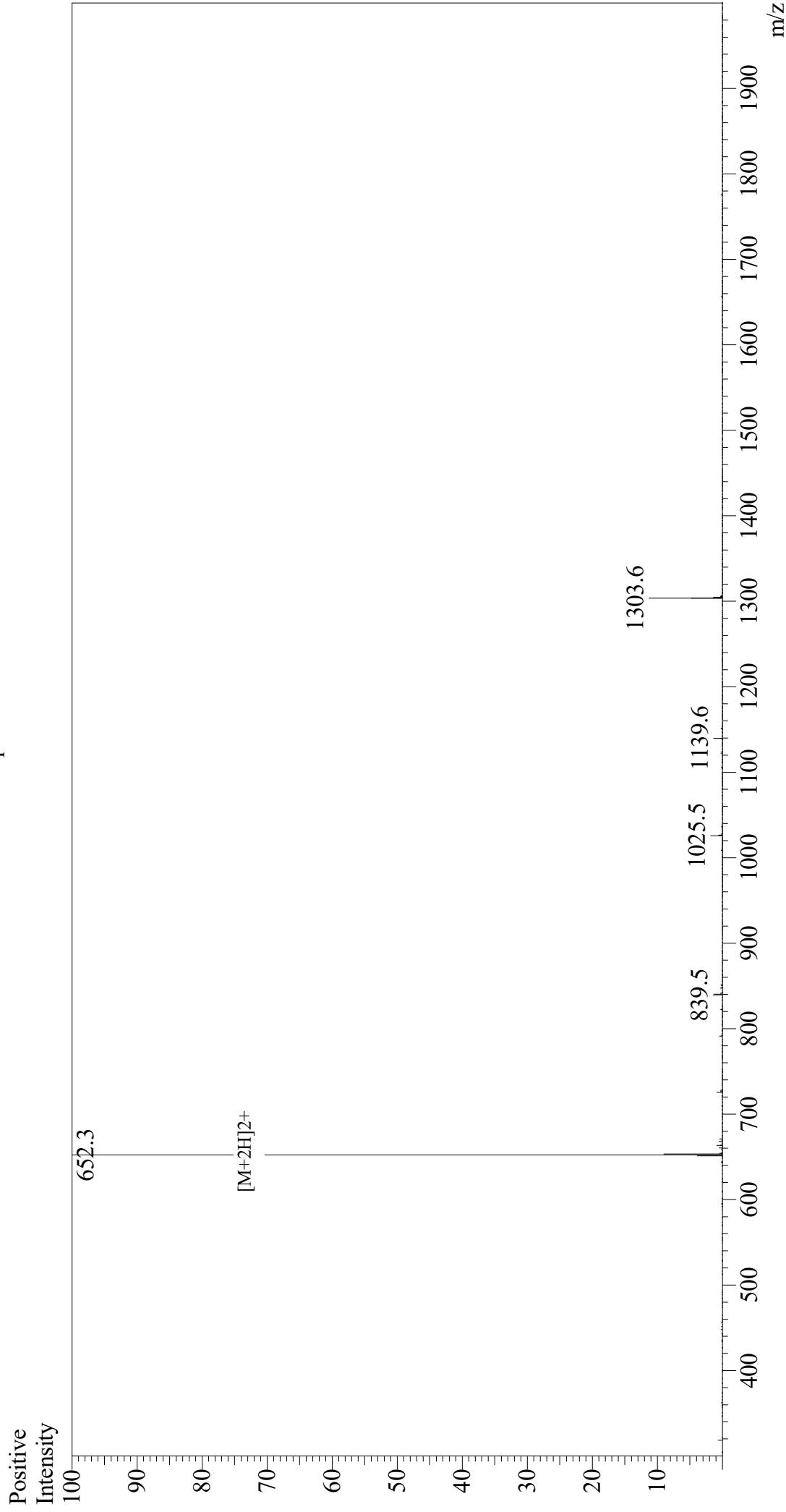


Mass Spectrum



Sample Information

Acquired by : Gary
Month-Day Processed : 07/30/19
Time Processed : 10:41:06 AM
Injection Volume : 0.3
Sample Name : Kisspeptin-10
Cat. No. : RP20494
Lot. No. : E4102019G
Theoretical MW : 1302.50
Observed MW : 1302.6

Interface : ESI
Nebulizing Gas Flow : 1.5L/min
CDL Temp : 250
Block Temp : 200

Equipment : GK11010007
Interface Bias : +4.5 kV
Drying Gas Flow : 5 L/min
T.Flow : 0.2 ml/min
B.conc : 50%H2O/50%MeOH