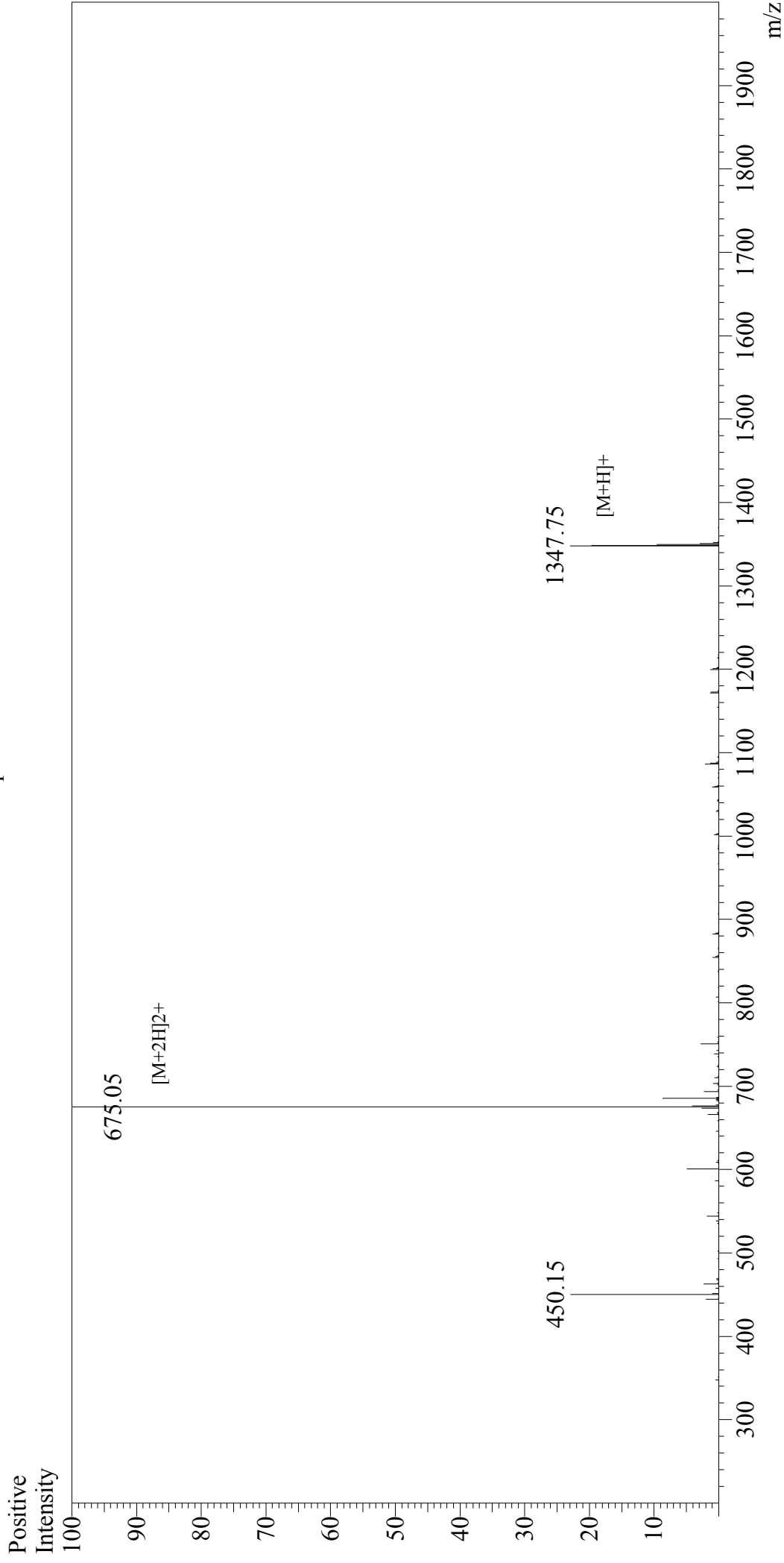


Mass Spectrum



Sample Information

User : Gary
Month-Day Processed : 03/23/17
Time Processed : 16:58:01
Injection Volume : 0.2
Sample Name : Substance P
Cat No. : RP10178
Lot No. : PE6641709
Theoretical MW : 1347.63
Observed MW : 1348.10

Interface

Interface : ESI
Nebulizing Gas Flow : 1.5L/min
CDL Temp : 250°C
Block Temp : 200°C

Interface Bias

Interface Bias : +4.5kV
Drying Gas Flow : 5 L/min
T.Flow : 0.2ml/min
B.conc : 50%H₂O/50%MeOH