

Sample Name :PACAP (1-27), human, ovine, rat
 Cat No. :RP10334
 Lot No. :E5983620C
 Time Processed :8:18:18
 Month-Day-Year Processed :03/27/2020

Pump A : 0.065% trifluoroacetic in 100% water (v/v)
 Pump B : 0.05% trifluoroacetic in 100% acetonitrile (v/v)
 Total Flow:1 ml/min
 Wavelength:220 nm

<<LC Time Program>>

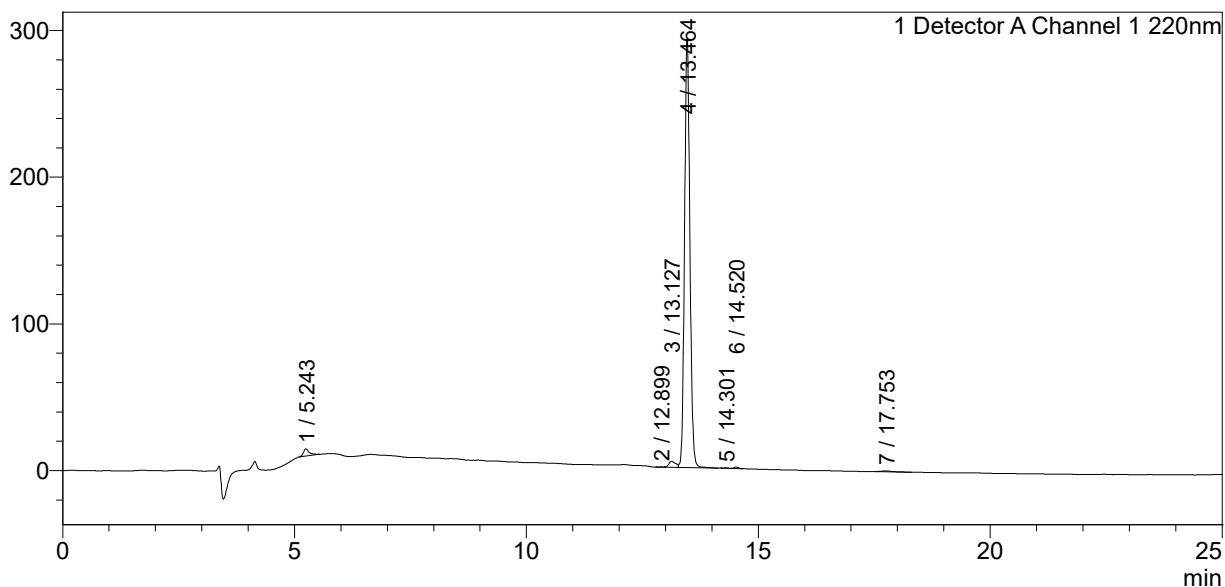
Time	Module	Command	Value
0.01	Pumps	Solvent B Conc.	5
25.00	Pumps	Solvent B Conc.	65
25.01	Pumps	Solvent B Conc.	95
27.00	Pumps	Solvent B Conc.	95
27.01	Pumps	Solvent B Conc.	5
35.00	Pumps	Solvent B Conc.	5
35.01	Controller	Stop	

<<Column Performance>>

<Detector A>
 Column : AlltimaTM C18 4.6 x 250 mm
 Equipment:ZJ19010141

<Chromatogram>

mV



<Peak Table>

Detector A Channel 1 220nm

Peak#	Ret. Time	Area	Height	Area%
1	5.243	41392	4828	1.685
2	12.899	1141	167	0.046
3	13.127	43491	4178	1.770
4	13.464	2352199	292916	95.753
5	14.301	2248	334	0.091
6	14.520	6152	1046	0.250
7	17.753	9894	650	0.403
Total		2456517	304120	100.000