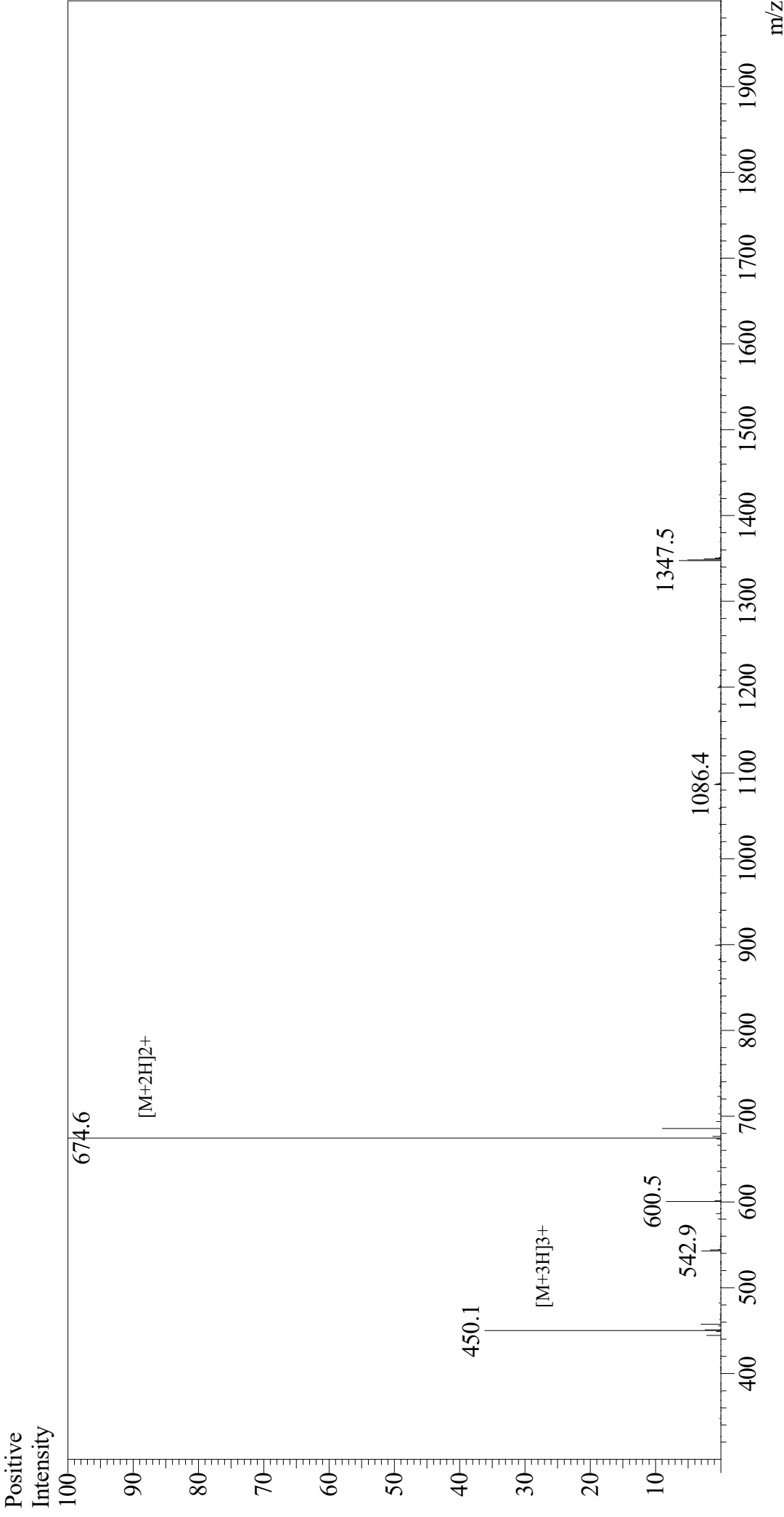


Mass Spectrum



Sample Information
Month-Day Processed : 11/12/20
Time Processed : 11:29:49 PM
Injection Volume : 0.5
Sample Name : Substance P
Cat. No. : RP10178
Lot. No. : E6036420K
Theoretical MW : 1347.63
Observed MW : 1347.2

Interface : ESI
Nebulizing Gas Flow : 1.5L/min
CDL Temp : 250
Block Temp : 200
Equipment : GK11010007
Interface Bias : +4.5 kV
Drying Gas Flow : 5 L/min
T.Flow : 0.2 ml/min
B.conc : 50% H2O/50% MeOH