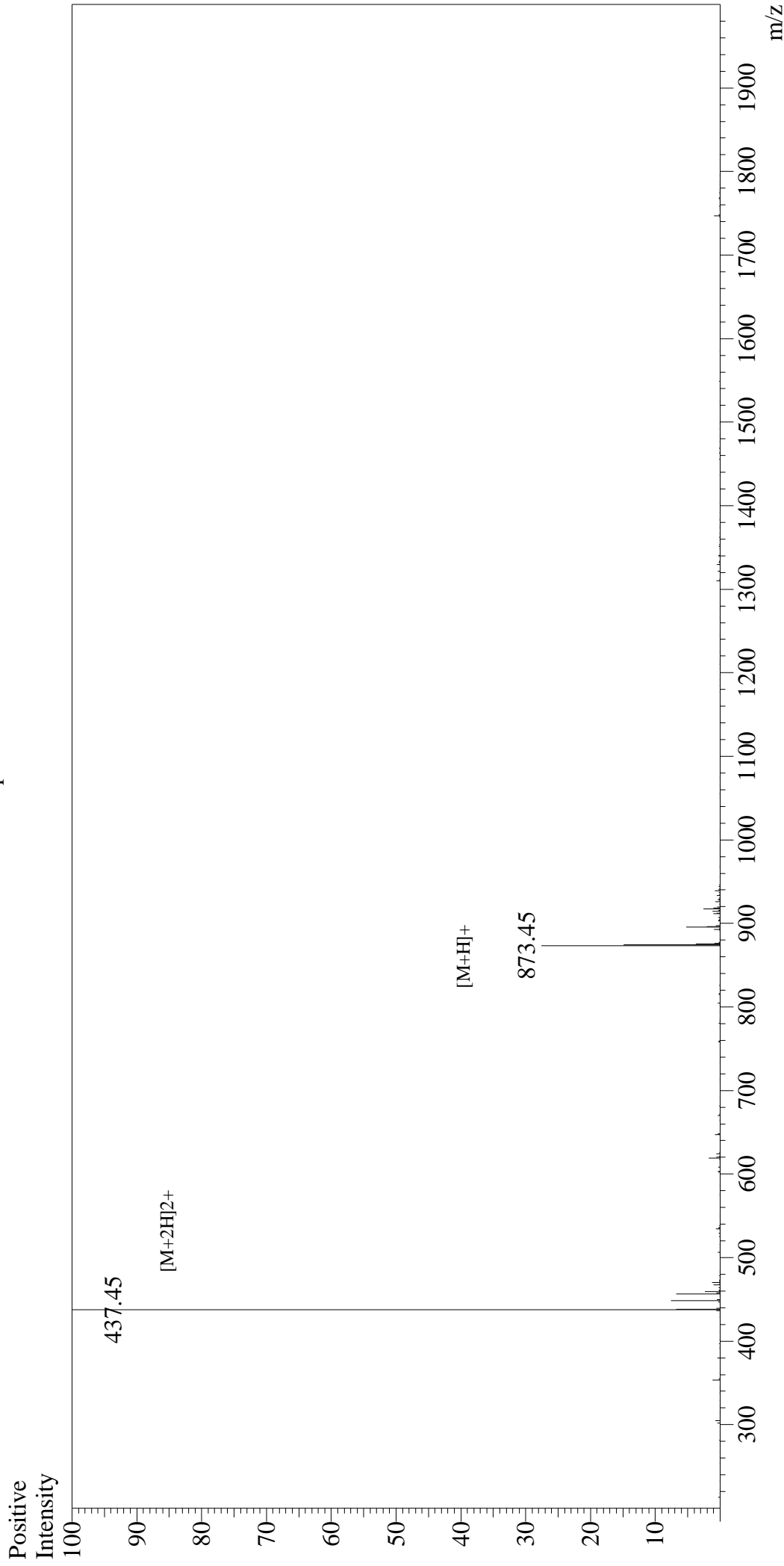


Mass Spectrum



Sample Information

User : Gary
Month-Day Processed : 10/23/16
Time Processed : 16:32:38
Injection Volume : 0.2
Sample Name : A-779
Cat No. : RPI1249
Lot No. : PE5331610
Theoretical MW : 873.00
Observed MW : 872.90

Interface : ESI
Nebulizing Gas Flow : 1.5L/min
CDL Temp : 250°C
Block Temp : 200°C

Interface Bias : +4.5kV
Drying Gas Flow : 5 L/min
T.Flow : 0.2ml/min
B.conc : 50%H2O/50%MeOH