

Sample Name : N-Boc-Phe-Leu-Phe-Leu-Phe
 Cat. No : RP12950
 Lot. No : PE3481801
 Pump A : 0.065% trifluoroacetic in 100% water (v/v)
 Pump B : 0.05% trifluoroacetic in 100% acetonitrile (v/v)
 Total Flow: 1 ml/min
 Wavelength: 220 nm

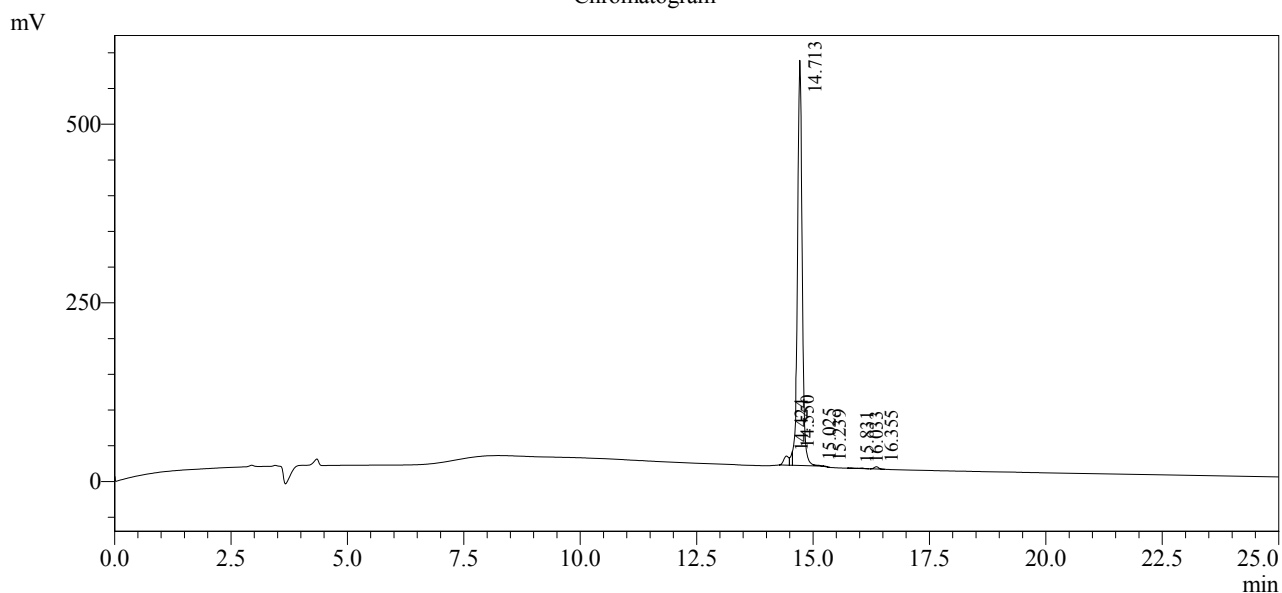
| Time | Unit | Command | Value | Comment |
|-------|------------|---------------|-------|---------|
| 0.01 | Pumps | Pump A B.Conc | 5 | |
| 25.00 | Pumps | Pump A B.Conc | 65 | |
| 25.01 | Pumps | Pump A B.Conc | 95 | |
| 27.00 | Pumps | Pump A B.Conc | 95 | |
| 27.01 | Pumps | Pump A B.Conc | 5 | |
| 35.00 | Pumps | Pump A B.Conc | 5 | |
| 35.01 | Controller | Stop | | |

<<Column Performance>>

<Detector A>

Column : Inertsil ODS-3 4.6 x 250 mm

Chromatogram



1 Det.A Ch1 / 220nm

Peak Table

Detector A Ch1 220nm

| Peak# | Ret. Time | Area | Height | Area % |
|-------|-----------|---------|--------|---------|
| 1 | 14.424 | 96417 | 12661 | 2.325 |
| 2 | 14.550 | 56953 | 17826 | 1.373 |
| 3 | 14.713 | 3953526 | 566911 | 95.320 |
| 4 | 15.025 | 9460 | 1414 | 0.228 |
| 5 | 15.239 | 2211 | 501 | 0.053 |
| 6 | 15.831 | 2426 | 437 | 0.058 |
| 7 | 16.033 | 5228 | 867 | 0.126 |
| 8 | 16.355 | 21436 | 3287 | 0.517 |
| Total | | 4147656 | 603902 | 100.000 |