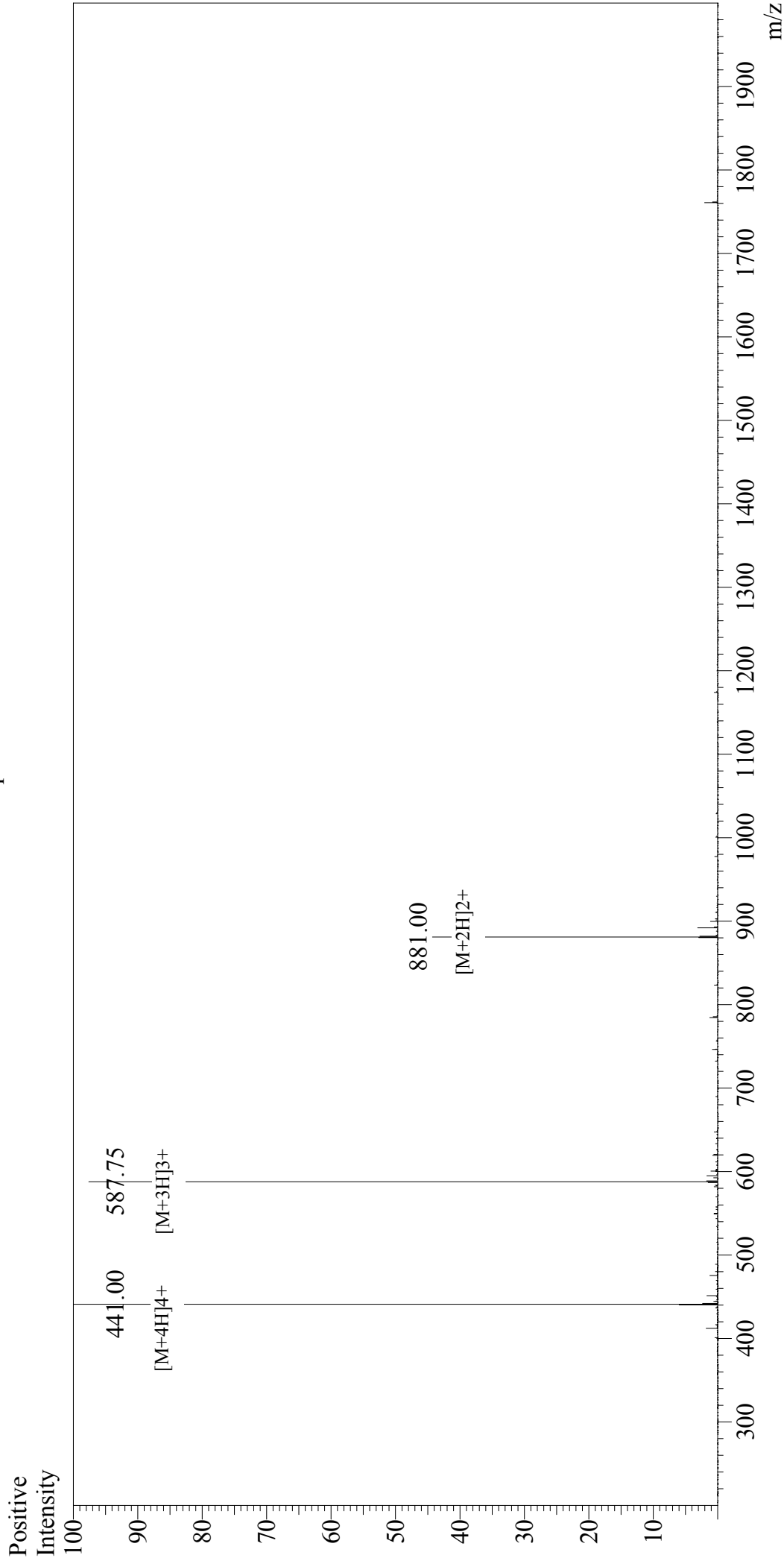


Mass Spectrum



Sample Information

User : Gary
Month-Day Processed : 11/01/17
Time Processed : 17:06:11
Injection Volume : 0.2
Sample Name : Angiotensinogen (1-14), human
Cat No. : RP10253
Lot No. : PE6821710
Theoretical MW : 1760.10
Observed MW : 1760.00

Interface : ESI
Nebulizing Gas Flow : 1.5L/min
CDL Temp : 250°C
Block Temp : 200°C

Interface Bias : +4.5kV
Drying Gas Flow : 5 L/min
T.Flow : 0.2ml/min
B.conc : 50%H2O/50%MeOH