

Sample Name :Glucagon-Like Peptide (GLP) I (7-37)  
 Cat No. :RP12738  
 Lot No. :E4893119I  
 Time Processed :8:59:57 AM  
 Month-Day-Year Processed :09/19/19

Pump A : 0.065% trifluoroacetic in 100% water (v/v)  
 Pump B : 0.05% trifluoroacetic in 100% acetonitrile (v/v)  
 Total Flow:1 ml/min  
 Wavelength:220 nm

<<LC Time Program>>

Time	Module	Command	Value
0.01	Pumps	Solvent B Conc.	5
25.00	Pumps	Solvent B Conc.	65
25.01	Pumps	Solvent B Conc.	95
27.00	Pumps	Solvent B Conc.	95
27.01	Pumps	Solvent B Conc.	5
35.00	Pumps	Solvent B Conc.	5
35.01	Controller	Stop	

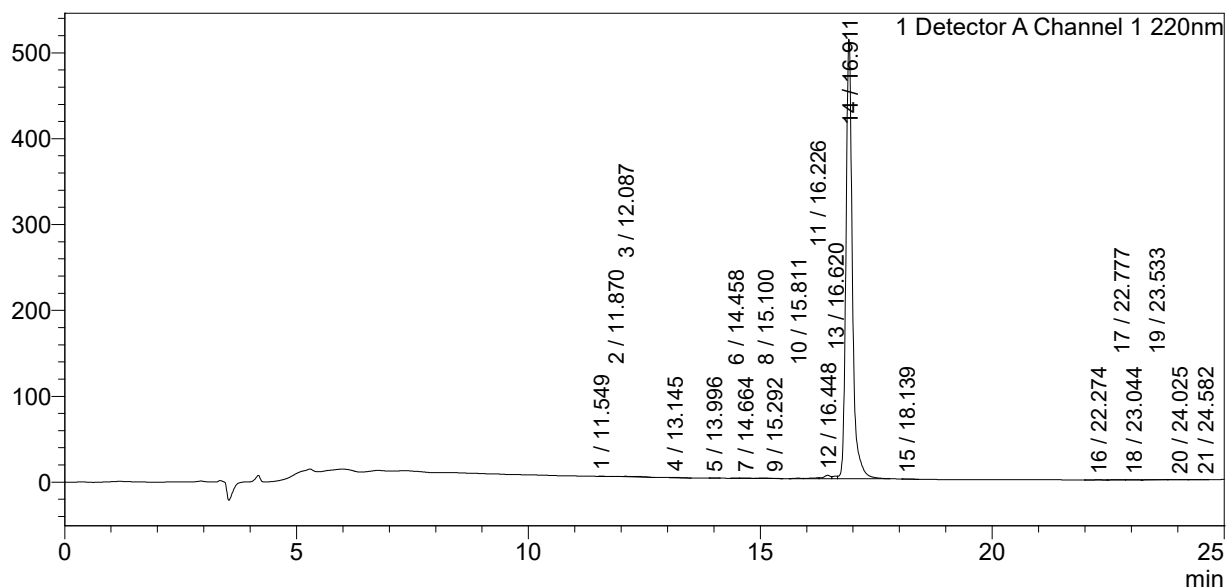
<<Column Performance>>

<Detector A>

Column : Inertsil ODS-3 4.6 x 250 mm  
 Equipment: ZJ19010141

### <Chromatogram>

mV



### <Peak Table>

Detector A Channel 1 220nm

Peak#	Ret. Time	Area	Height	Area%
1	11.549	1090	63	0.021
2	11.870	1568	261	0.031
3	12.087	21778	543	0.428
4	13.145	4151	246	0.082
5	13.996	1142	161	0.022
6	14.458	1555	243	0.031
7	14.664	2698	251	0.053
8	15.100	4099	340	0.081
9	15.292	2811	328	0.055
10	15.811	5264	555	0.104
11	16.226	12106	903	0.238
12	16.448	39712	3947	0.781
13	16.620	20668	2921	0.407
14	16.911	4949585	512019	97.360
15	18.139	1786	153	0.035

Peak#	Ret. Time	Area	Height	Area%
16	22.274	1283	89	0.025
17	22.777	2124	119	0.042
18	23.044	1529	110	0.030
19	23.533	4634	312	0.091
20	24.025	2342	172	0.046
21	24.582	1849	121	0.036
Total		5083775	523858	100.000