

Sample Name :Gastrin-Releasing Peptide, human
 Cat No. : RP10791
 Lot No. : E4753819I
 Time Processed : 17:08:08
 Month-Day-Year Processed : 09/21/2019

Pump A : 0.065% trifluoroacetic in 100% water (v/v)
 Pump B : 0.05% trifluoroacetic in 100% acetonitrile (v/v)
 Total Flow:1 ml/min
 Wavelength:220 nm

<<LC Time Program>>

| Time | Module | Command | Value |
|-------|------------|--------------|-------|
| 0.01 | Pumps | Pump B Conc. | 5 |
| 25.00 | Pumps | Pump B Conc. | 65 |
| 25.01 | Pumps | Pump B Conc. | 95 |
| 27.00 | Pumps | Pump B Conc. | 95 |
| 27.01 | Pumps | Pump B Conc. | 5 |
| 32.00 | Pumps | Pump B Conc. | 5 |
| 32.01 | Controller | Stop | |

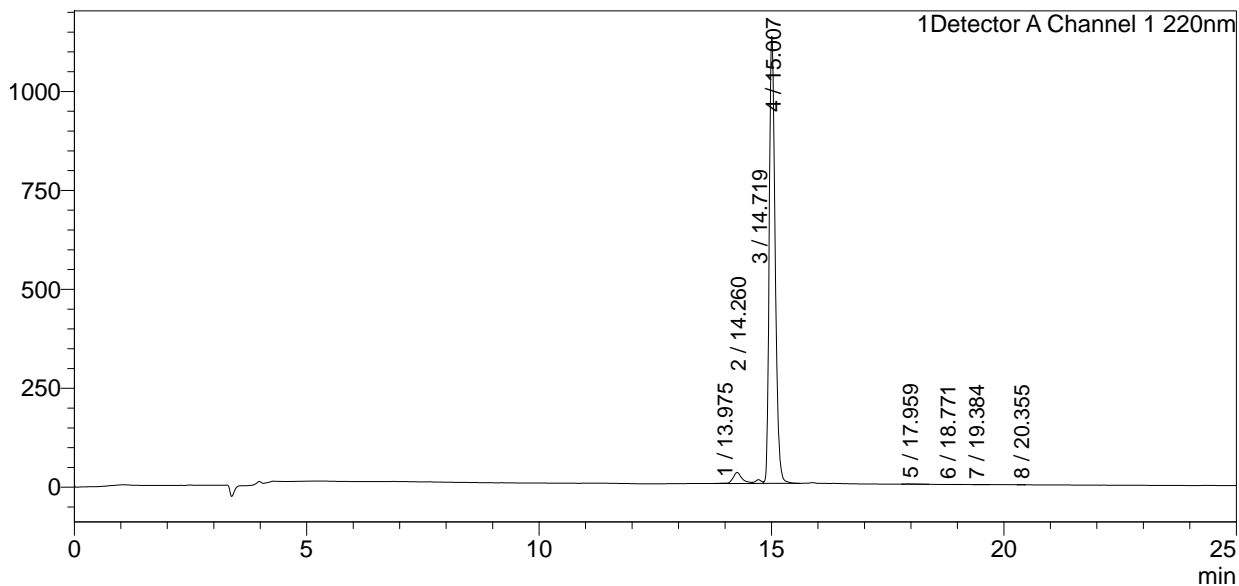
<<Column Performance>>

<Detector A>

Column :Inertsil ODS-3 4.6 x 250 mm
 Equipment:GK12010012

<Chromatogram>

mV



<Peak Table>

Detector A Channel 1 220nm

| Peak# | Ret. Time | Area | Height | Area% |
|-------|-----------|----------|---------|---------|
| 1 | 13.975 | 8537 | 881 | 0.082 |
| 2 | 14.260 | 367715 | 28043 | 3.523 |
| 3 | 14.719 | 86267 | 9630 | 0.827 |
| 4 | 15.007 | 9960637 | 1129143 | 95.440 |
| 5 | 17.959 | 9039 | 848 | 0.087 |
| 6 | 18.771 | 1920 | 130 | 0.018 |
| 7 | 19.384 | 1343 | 126 | 0.013 |
| 8 | 20.355 | 1138 | 263 | 0.011 |
| Total | | 10436595 | 1169065 | 100.000 |