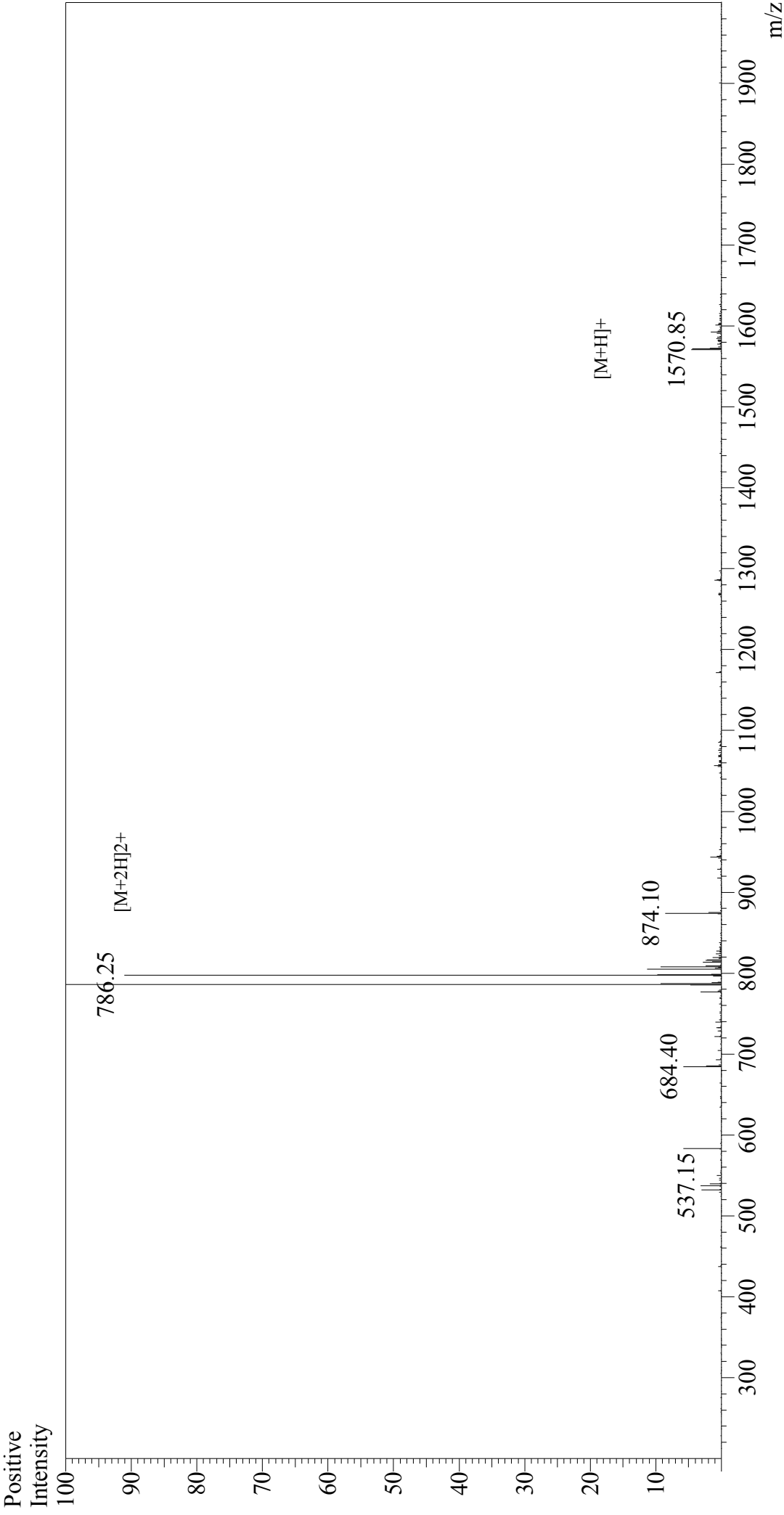


Mass Spectrum



Sample Information

Acquired by: Gary
 Month-Day Processed: 09/01/16
 Time Processed: 10:47:21
 Injection Volume: 0.2
 Sample Name: [Glu1]-Fibrinopeptide B
 Cat. No.: RP20439
 Lot. No.: PE2081711
 Theoretical MW: 1570.58
 Observed MW: 1570.50

Interface: ESI
 Nebulizing Gas Flow: 1.5L/min
 CDL Temp: 250°C
 Block Temp: 200°C

Interface Bias: +4.5 kV
 Drying Gas Flow: 5 L/min
 T.Flow: 0.2 ml/min
 B.conc: 50%H₂O/50%MeOH