

Sample Name : Hexa-His  
 Cat. No. :RP11737  
 Lot. No. :PE2511803

Pump A : 0.065% trifluoroacetic in 100% water (v/v)  
 Pump B : 0.05% trifluoroacetic in 100% acetonitrile (v/v)  
 Total Flow:1 ml/min  
 Wavelength:220 nm

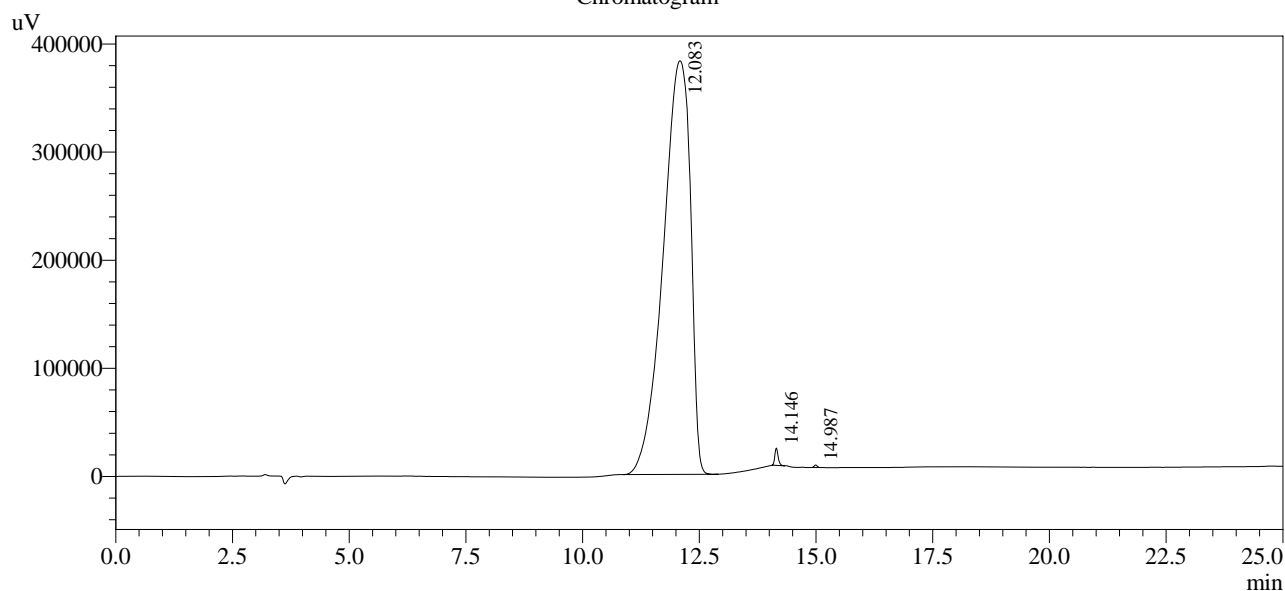
| Time  | Unit       | Command       | Value | Comment |
|-------|------------|---------------|-------|---------|
| 0.01  | Pumps      | Pump A B.Conc | 0     |         |
| 5.00  | Pumps      | Pump A B.Conc | 0     |         |
| 20.00 | Pumps      | Pump A B.Conc | 30    |         |
| 25.00 | Pumps      | Pump A B.Conc | 65    |         |
| 25.01 | Pumps      | Pump A B.Conc | 95    |         |
| 31.00 | Pumps      | Pump A B.Conc | 95    |         |
| 31.01 | Pumps      | Pump A B.Conc | 0     |         |
| 40.00 | Pumps      | Pump A B.Conc | 0     |         |
| 40.01 | Controller | Stop          |       |         |

<<Column Performance>>

<Detector A>

Column : Alltima™ C18 4.6 x 250 mm

Chromatogram



1 Det.A Ch1 / 220nm

Peak Table

Detector A Ch1 220nm

| Peak# | Ret. Time | Area     | Height | Area %  |
|-------|-----------|----------|--------|---------|
| 1     | 12.083    | 15566435 | 382539 | 99.434  |
| 2     | 14.146    | 78909    | 16094  | 0.504   |
| 3     | 14.987    | 9727     | 2216   | 0.062   |
| Total |           | 15655070 | 400849 | 100.000 |