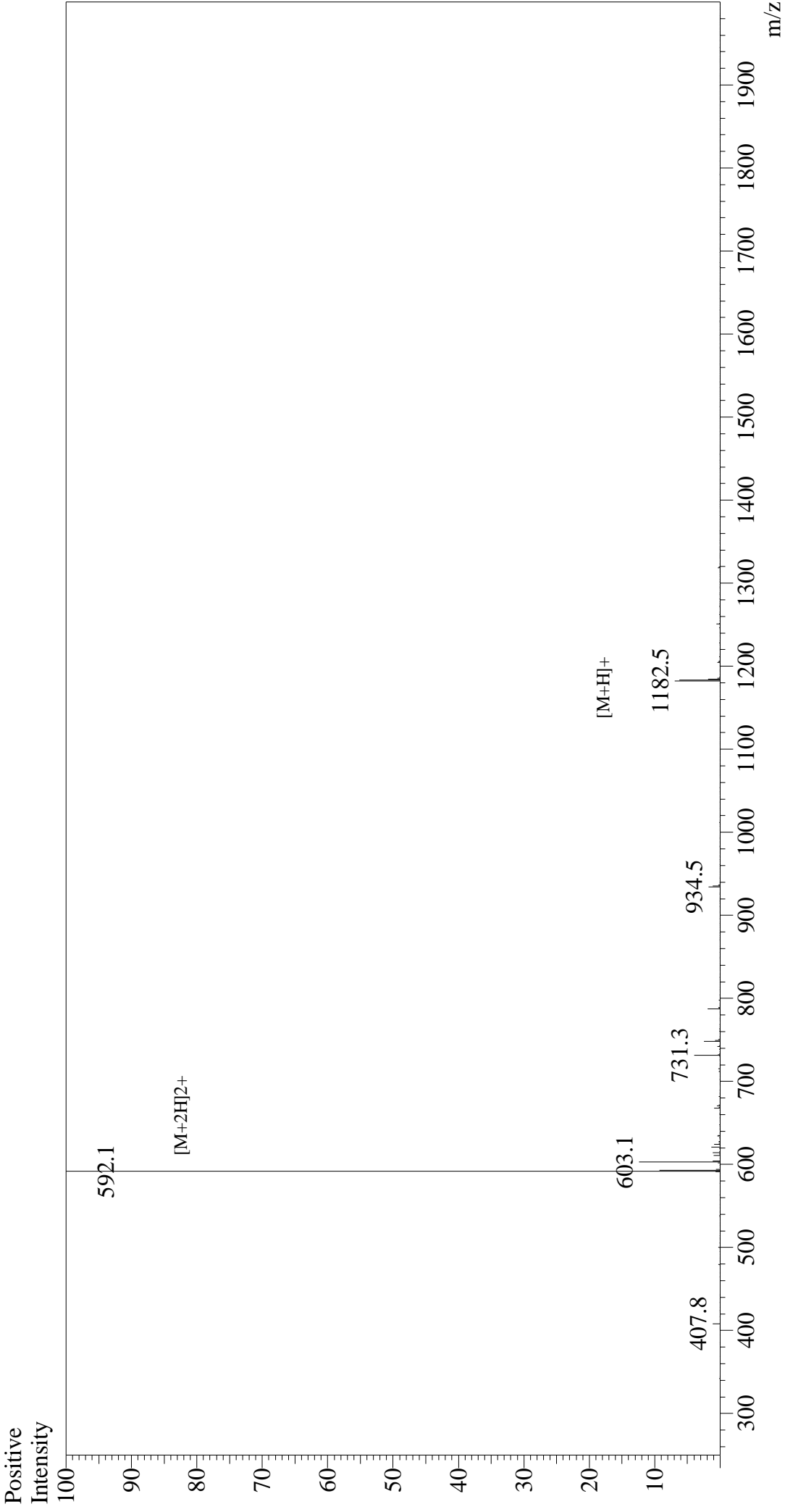


Mass Spectrum



Sample Information

Acquired by : Gary
Month-Day Processed : 11/07/18
Time Processed : 21:05:10
Injection Volume : 0.2
Sample Name : GnRHI
Cat. No. : RP20303
Lot. No. : PE0261811
Theoretical MW : 1182.32
Observed MW : 1182.2

Interface : ESI
Nebulizing Gas Flow : 1.5L/min
CDL Temp : 250°C
Block Temp : 200°C

Equipment : GK11010007
Interface Bias : +4.5 kV
Drying Gas Flow : 5 L/min
T.Flow : 0.2 ml/min
B.conc : 50% H₂O/50% MeOH