

Sample Name : OVA Peptide (323-339)
 Cat. No. : RP10610
 Lot. No. : E1310620D
 Time Processed : 11:06:17
 Month-Day-Year Processed : 04/24/2020

Pump A : 0.065% trifluoroacetic in 100% water (v/v)
 Pump B : 0.05% trifluoroacetic in 100% acetonitrile (v/v)
 Total Flow: 1 ml/min
 Wavelength: 220 nm

| Time | Unit | Command | Value | Comment |
|-------|------------|---------------|-------|---------|
| 0.01 | Pumps | Pump A B.Conc | 5 | |
| 25.00 | Pumps | Pump A B.Conc | 65 | |
| 25.01 | Pumps | Pump A B.Conc | 95 | |
| 27.00 | Pumps | Pump A B.Conc | 95 | |
| 27.01 | Pumps | Pump A B.Conc | 5 | |
| 35.00 | Pumps | Pump A B.Conc | 5 | |
| 35.01 | Controller | Stop | | |

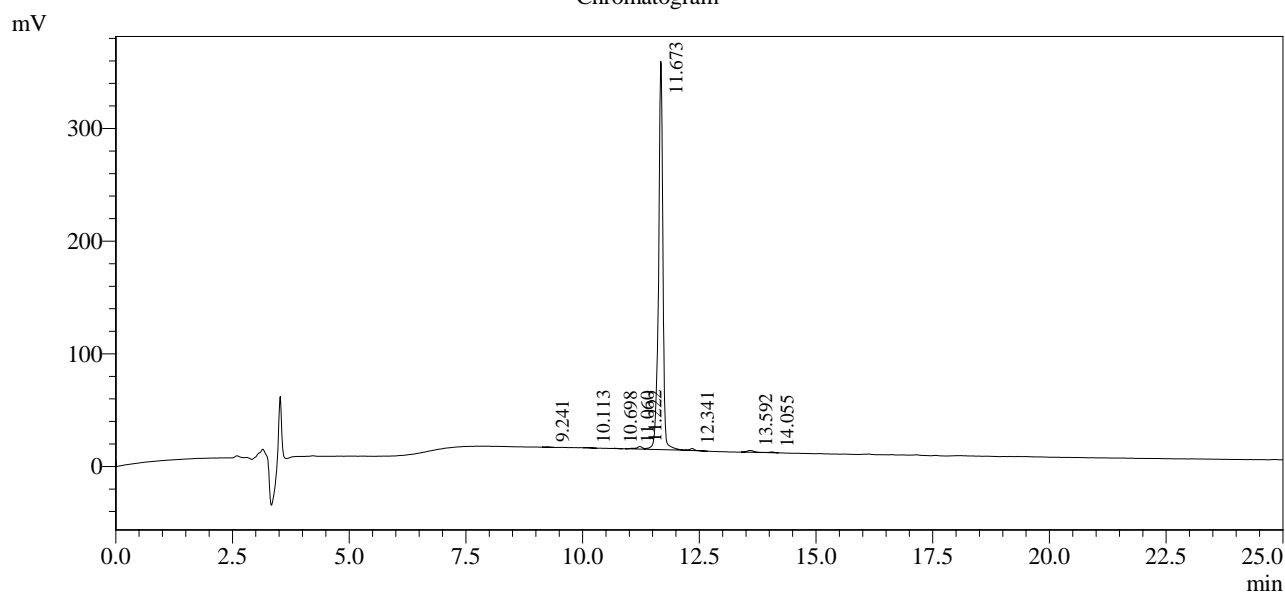
<<Column Performance>>

<Detector A>

Column : Inertsil ODS-3 4.6 x 250 mm

Equipment: GK11010009

Chromatogram



1 Det.A Ch1 / 220nm

Peak Table

Detector A Ch1 220nm

| Peak# | Ret. Time | Area | Height | Area % |
|-------|-----------|---------|--------|---------|
| 1 | 9.241 | 1872 | 287 | 0.082 |
| 2 | 10.113 | 2361 | 454 | 0.103 |
| 3 | 10.698 | 1599 | 205 | 0.070 |
| 4 | 11.060 | 3721 | 638 | 0.163 |
| 5 | 11.222 | 18628 | 2348 | 0.816 |
| 6 | 11.673 | 2221805 | 344701 | 97.282 |
| 7 | 12.341 | 12570 | 1815 | 0.550 |
| 8 | 13.592 | 16479 | 1594 | 0.722 |
| 9 | 14.055 | 4840 | 663 | 0.212 |
| Total | | 2283874 | 352704 | 100.000 |