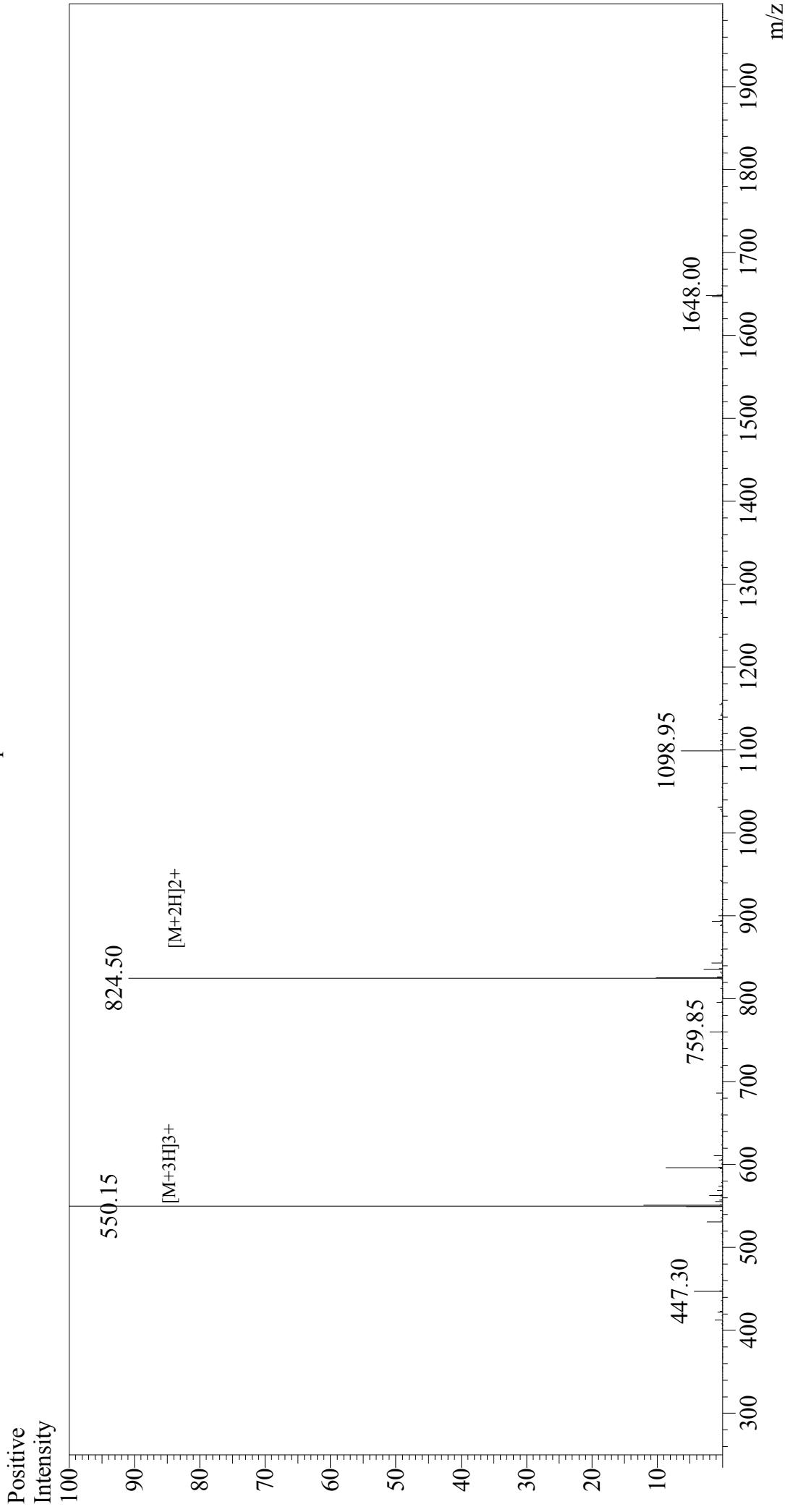


# Mass Spectrum



### Sample Information

Acquired by : Gary  
 Month-Day Processed : 06/29/18  
 Time Processed : 11:08:33  
 Injection Volume : 0.2  
 Sample Name : [Nle4, D-Phe7]- $\alpha$ -MSH, amide  
 Cat. No. : RP10658  
 Lot. No. : PE9411806  
 Theoretical MW : 1647.00  
 Observed MW : 1647.45

Interface : ESI  
 Nebulizing Gas Flow : 1.5L/min  
 CDL Temp : 250°C  
 Block Temp : 200°C

Interface Bias : +4.5 kV  
 Drying Gas Flow : 5 L/min  
 T.Flow : 0.2 ml/min  
 B.conc : 50% $H_2O$ /50% $MeOH$