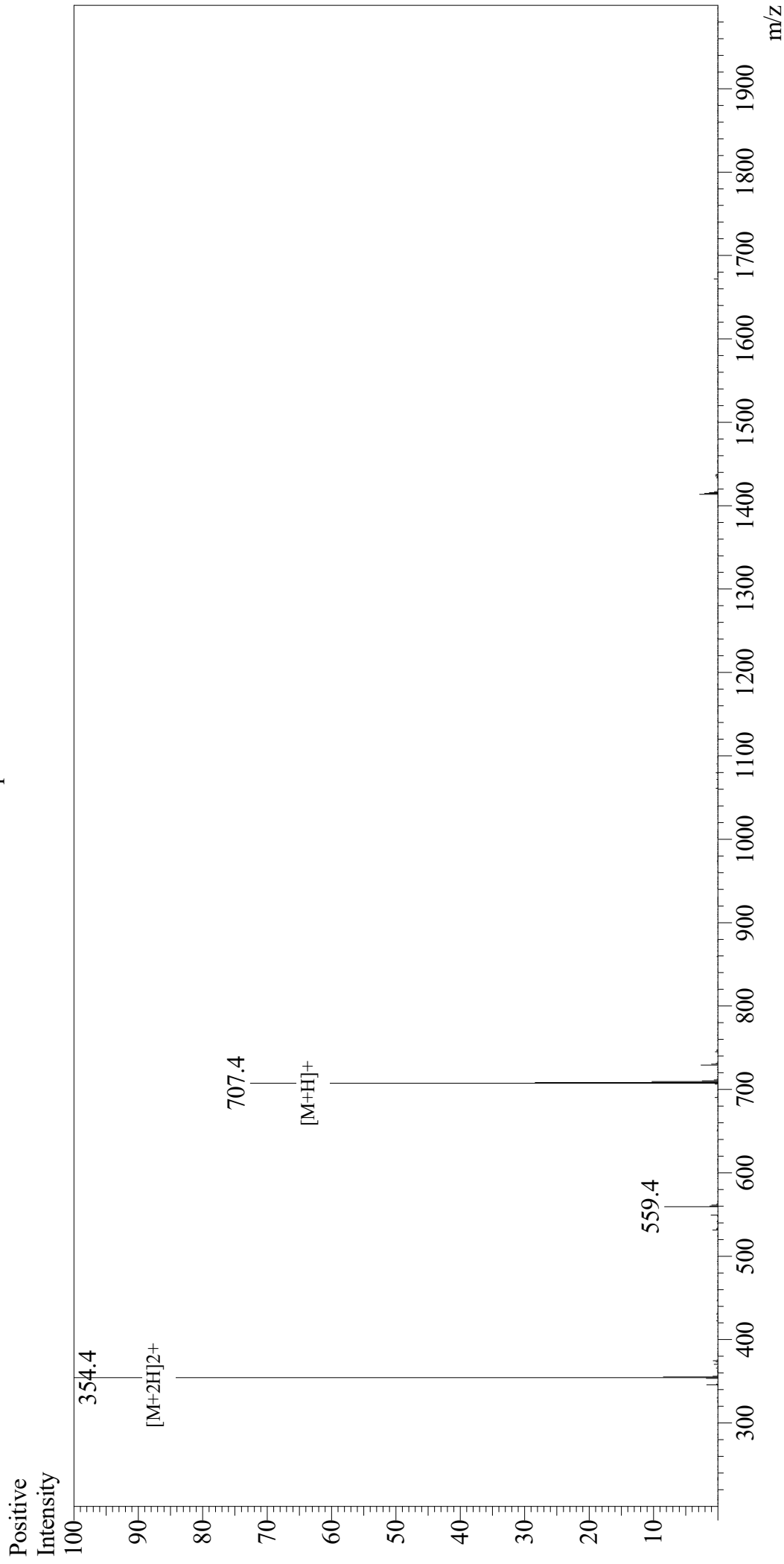


# Mass Spectrum



## Sample Information

User : Gary  
Month-Day Processed : 10/06/19  
Time Processed : 08:35:40 PM  
Injection Volume : 0.3  
Sample Name : Eledoisin Related Peptide  
Cat No. : RP10457  
Lot No. : E7087919J  
Theoretical MW : 706.94  
Observed MW : 706.8

Interface : ESI  
Nebulizing Gas Flow : 1.5L/min  
CDL Temp : 250  
Block Temp : 200

Equipment : GK11010007  
Interface Bias : +4.5kV  
Drying Gas Flow : 5 L/min  
T.Flow : 0.2ml/min  
B.conc : 50%H<sub>2</sub>O/50%MeOH