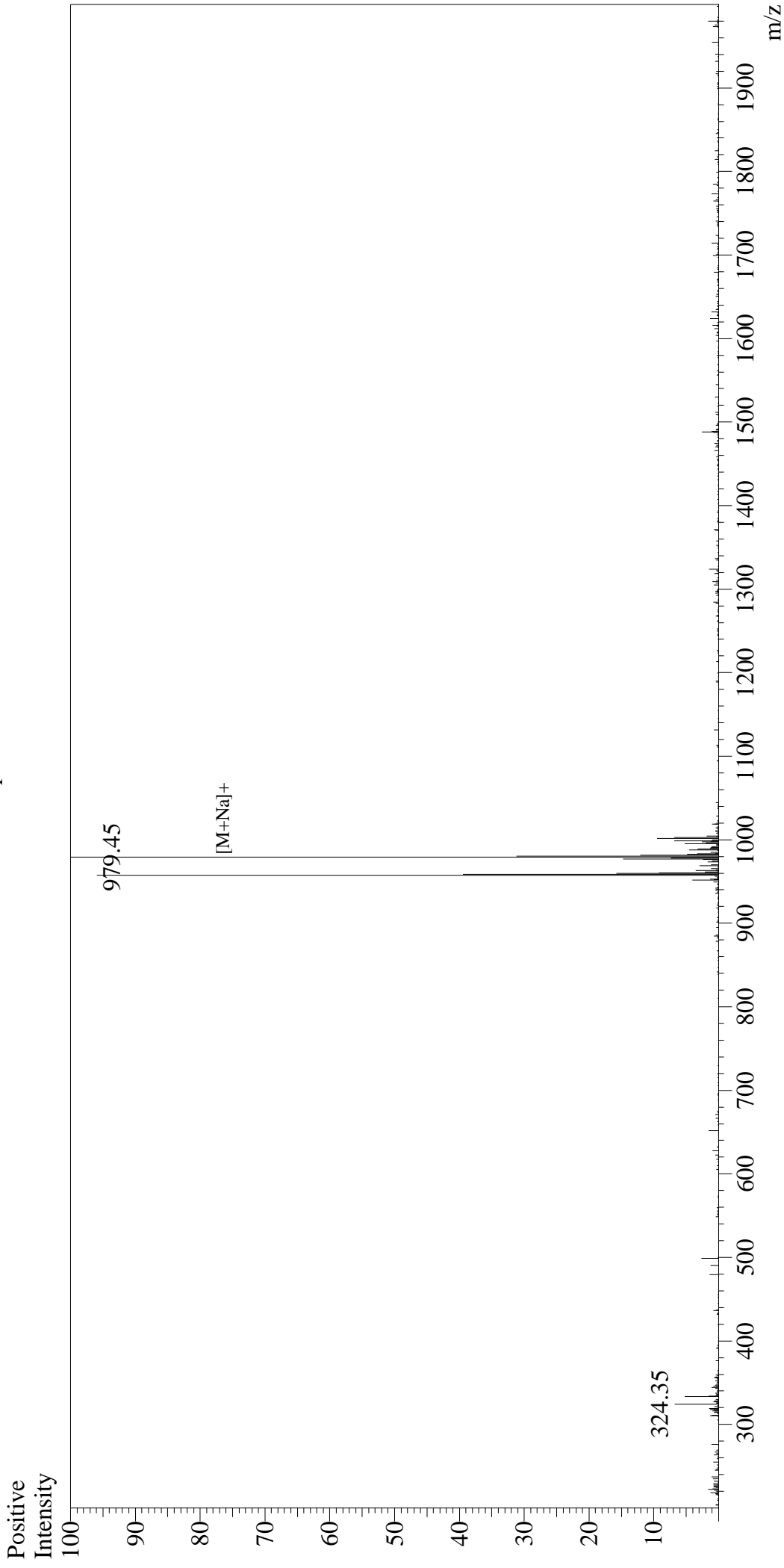


Mass Spectrum



Sample Information

User : Gary
Month-Day Processed : 02/04/17
Time Processed : 13:33:03
Injection Volume : 0.2
Sample Name : Crustacean Cardioactive Peptide (CCAP)
Cat No. : RPI0572
Lot No. : PE2001702
Theoretical MW : 957.10
Observed MW : 957.45

Interface

Interface : ESI
Nebulizing Gas Flow : 1.5L/min
CDL Temp : 250°C
Block Temp : 200°C

Interface Bias

Interface Bias : +4.5kV
Drying Gas Flow : 5 L/min
T.Flow : 0.2ml/min
B.conc : 50%H₂O/50%MeOH