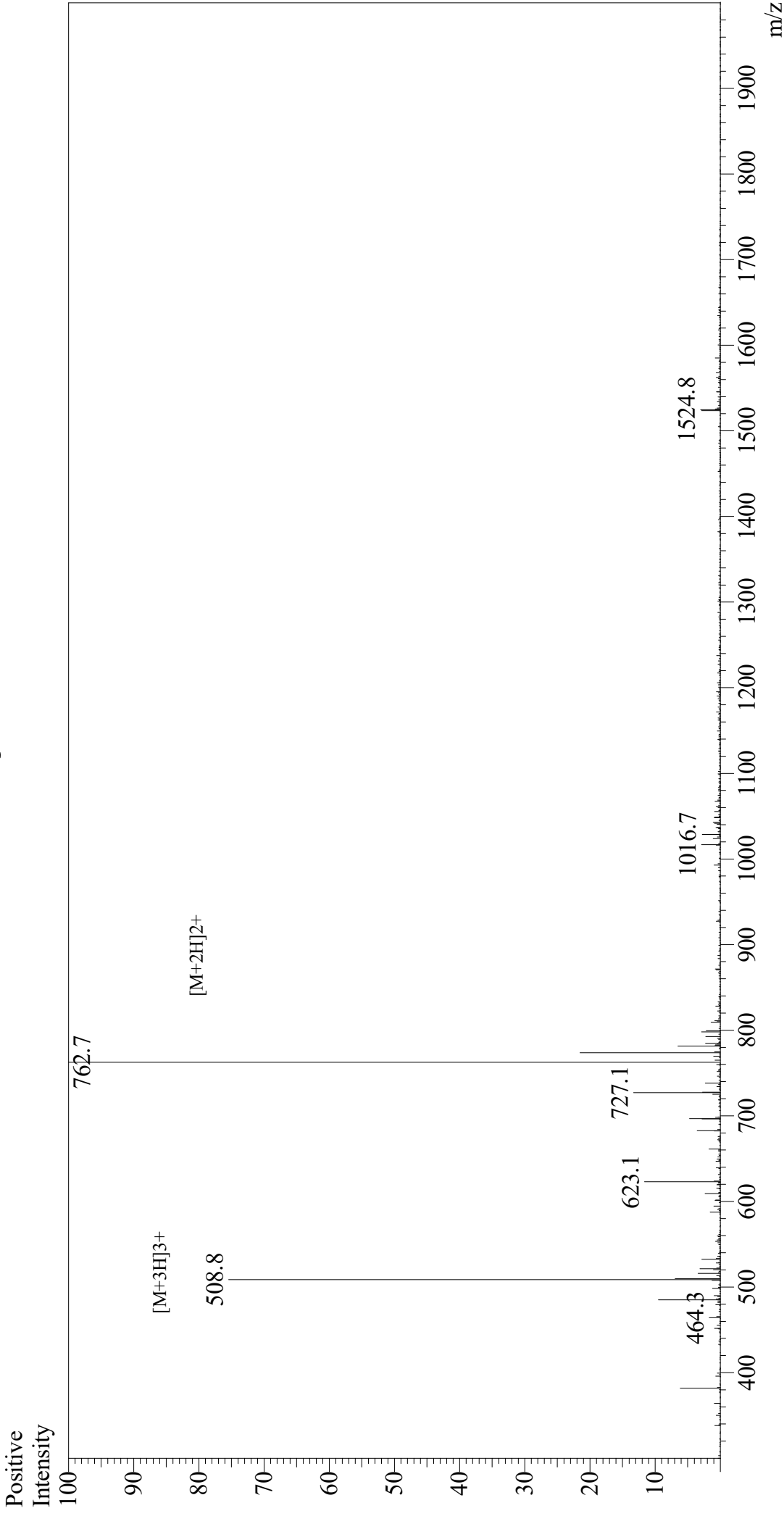


# Mass Spectrum



## Sample Information

Acquired by : Gary  
Month-Day Processed : 07/14/20  
Time Processed : 6:02:03 PM  
Injection Volume : 0.3  
Sample Name : Osteogenic Growth Peptide, OGP  
Cat No. : RP20311  
Lot No. : E8999720G  
Theoretical MW : 1523.76  
Observed MW : 1523.4

Interface : ESI  
Nebulizing Gas Flow : 1.5L/min  
CDL Temp : 250  
Block Temp : 200

Equipment : GK11010007  
Interface Bias : +4.5 kV  
Drying Gas Flow : 5 L/min  
T.Flow : 0.2 ml/min  
B.conc : 50% H2O/50% MeOH