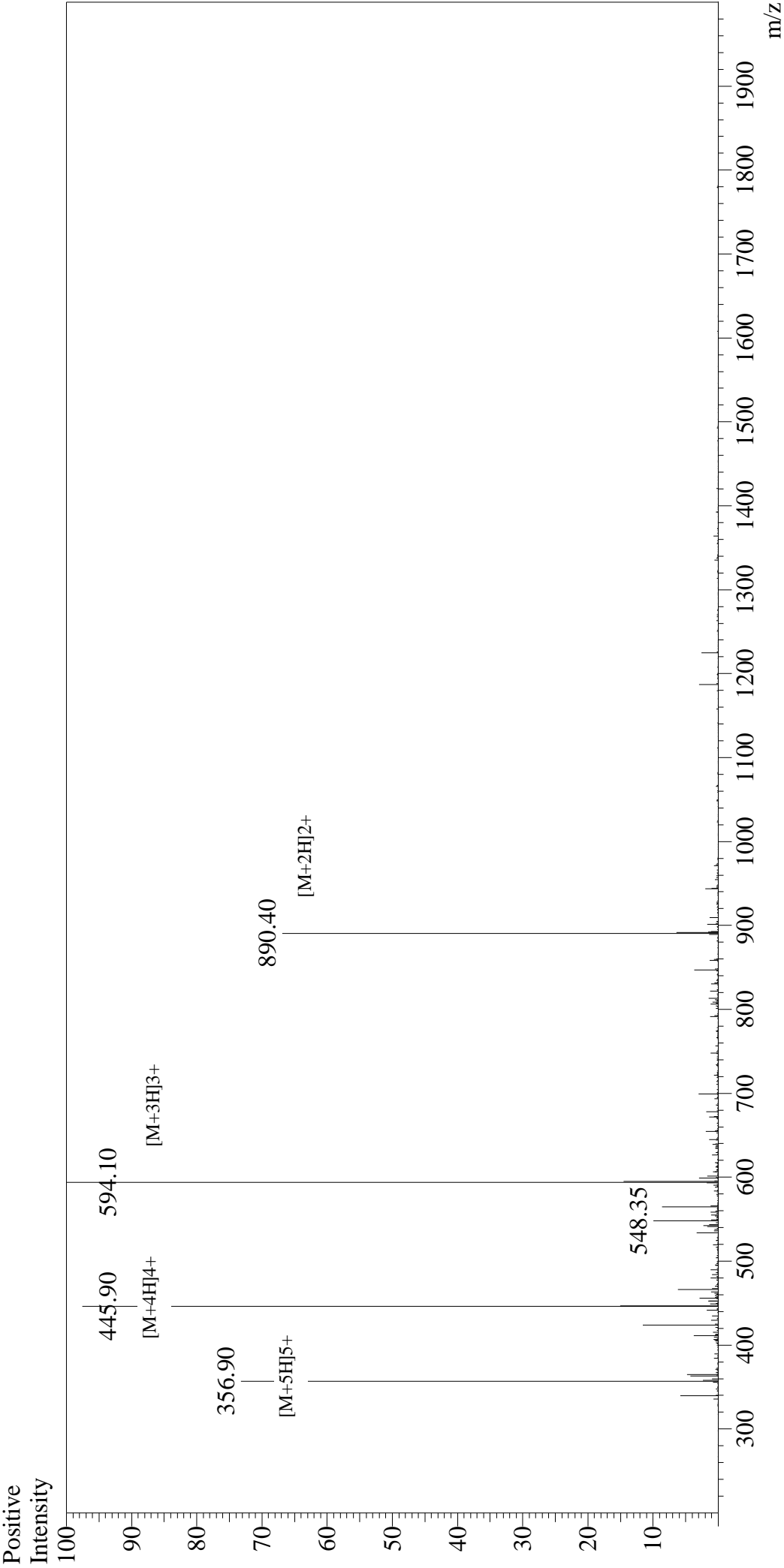


Mass Spectrum



Sample Information		Interface		Interface Bias	
User :	Gary	Nebulizing Gas Flow	:ESI	Drying Gas Flow	:+4.5kV
Month-Day Processed :	11/12/16	CDL Temp	:1.5L/min	T.Flow	:5 L/min
Time Processed :	15:41:26	Block Temp	:250°C	B.conc	:0.2ml/min
Injection Volume :	0.2		:200°C		:50%H2O/50%MeOH
Sample Name :		SAMs Peptide			
Cat No. :	RP10172				
Lot No. :	PE4861611				
Theoretical MW :	1779.20				
Observed MW :	1779.30				