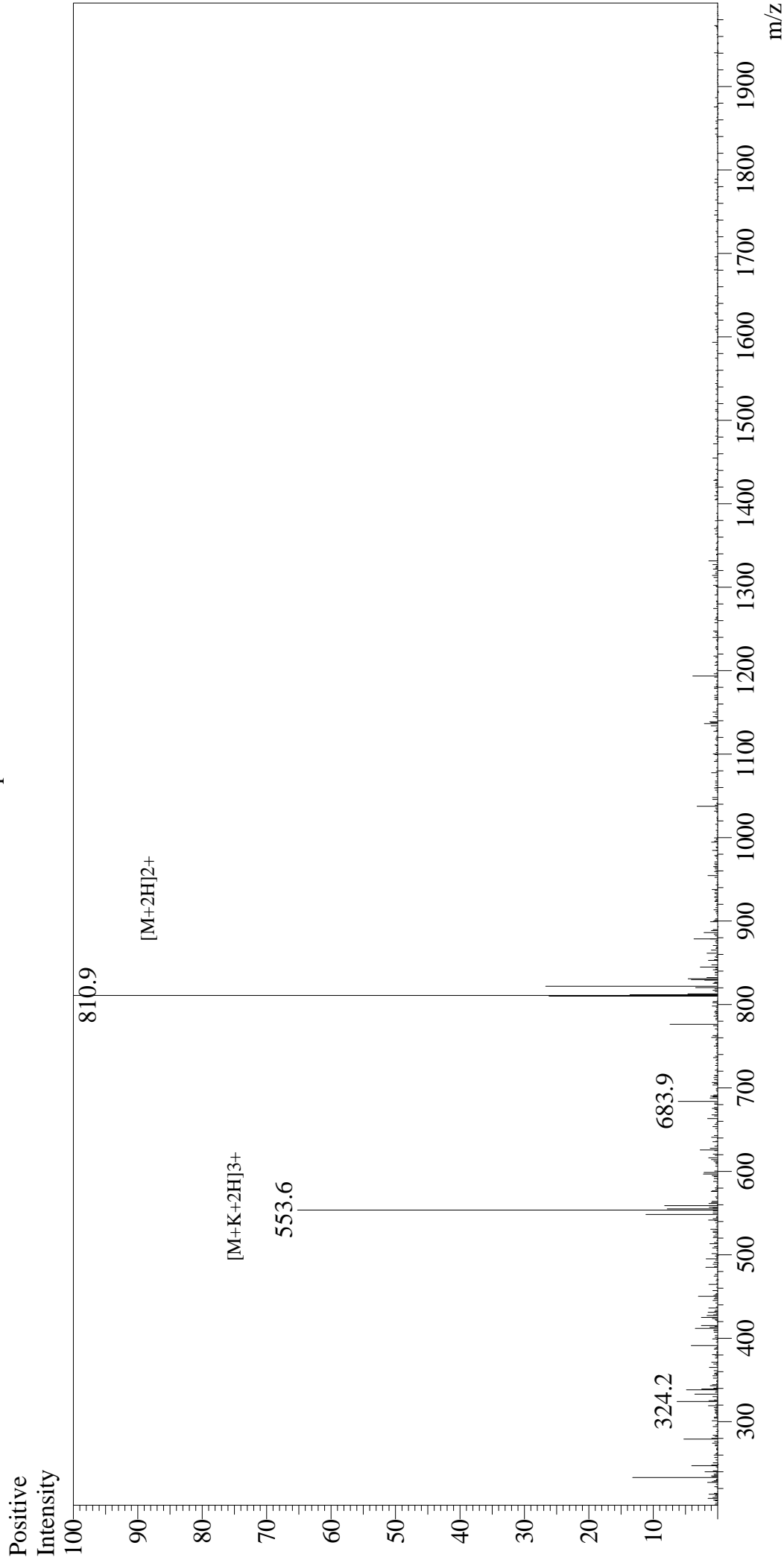


# Mass Spectrum



[M+2H]<sup>2+</sup>

[M+K+2H]<sup>3+</sup>

## Sample Information

User : Gary  
Month-Day Processed : 02/19/19  
Time Processed : 8:15:06  
Injection Volume : 0.2  
Sample Name : Bombesin  
Cat No. : RP11157  
Lot No. : PE4301902  
Theoretical MW : 1619.90  
Observed MW : 1619.8

Interface : ESI  
Nebulizing Gas Flow : 1.5L/min  
CDL Temp : 250  
Block Temp : 200

Equipment : GK11010007  
Interface Bias : +4.5kV  
Drying Gas Flow : 5 L/min  
T.Flow : 0.2ml/min  
B.conc : 50%H<sub>2</sub>O/50%MeOH