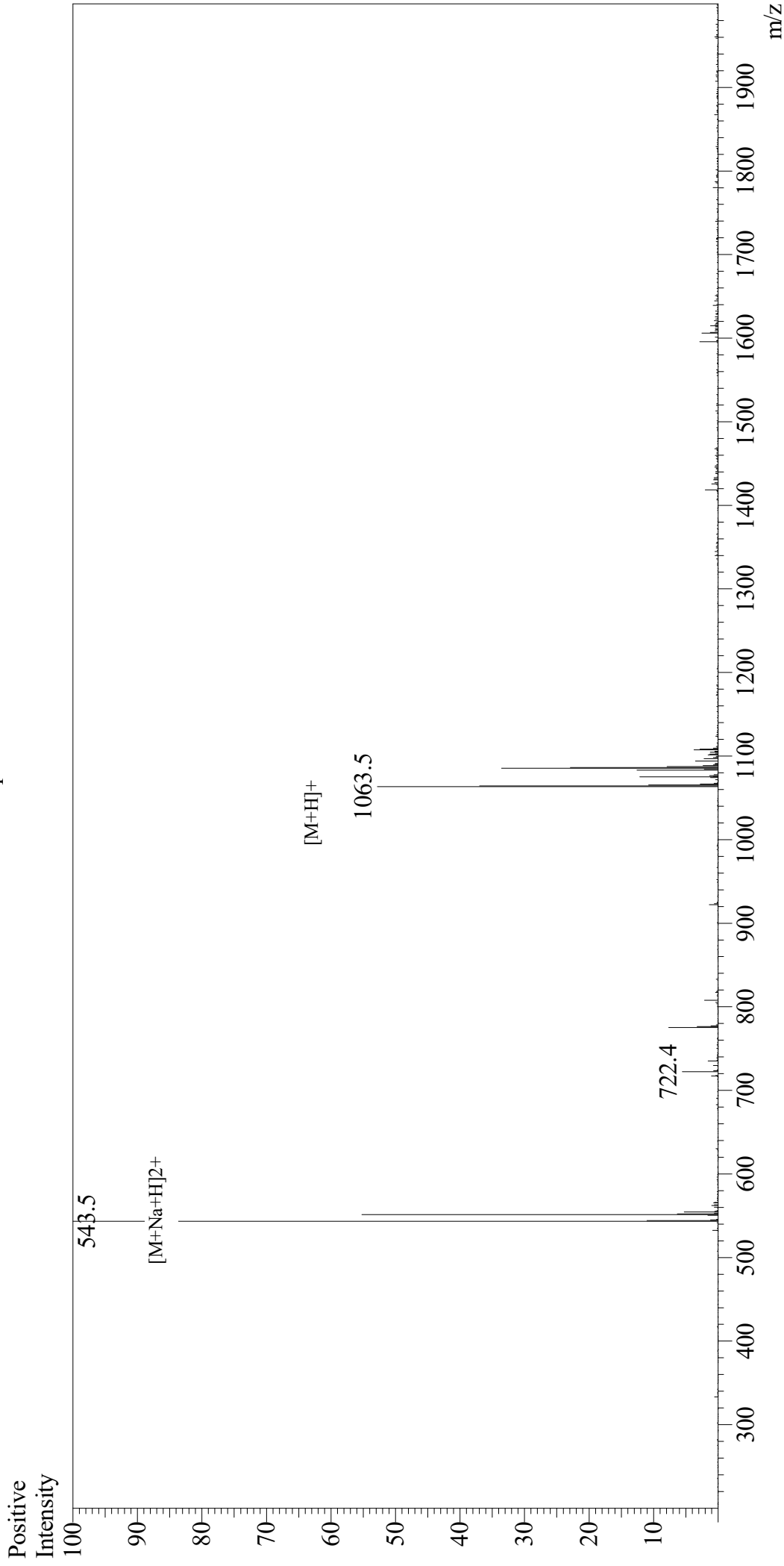


# Mass Spectrum



## Sample Information

User : Gary  
Month-Day Processed : 12/06/18  
Time Processed : 08:27:03 PM  
Injection Volume : 0.1  
Sample Name : Chemerin-9 (149-157)  
Cat No. : RP20248  
Lot No. : PE8811812  
Theoretical MW : 1063.17  
Observed MW : 1064.0

Interface : ESI  
Nebulizing Gas Flow : 1.5L/min  
CDL Temp : 250  
Block Temp : 200

Equipment : GK11010007  
Interface Bias : +4.5kV  
Drying Gas Flow : 5 L/min  
T.Flow : 0.2ml/min  
B.conc : 50%H<sub>2</sub>O/50%MeOH