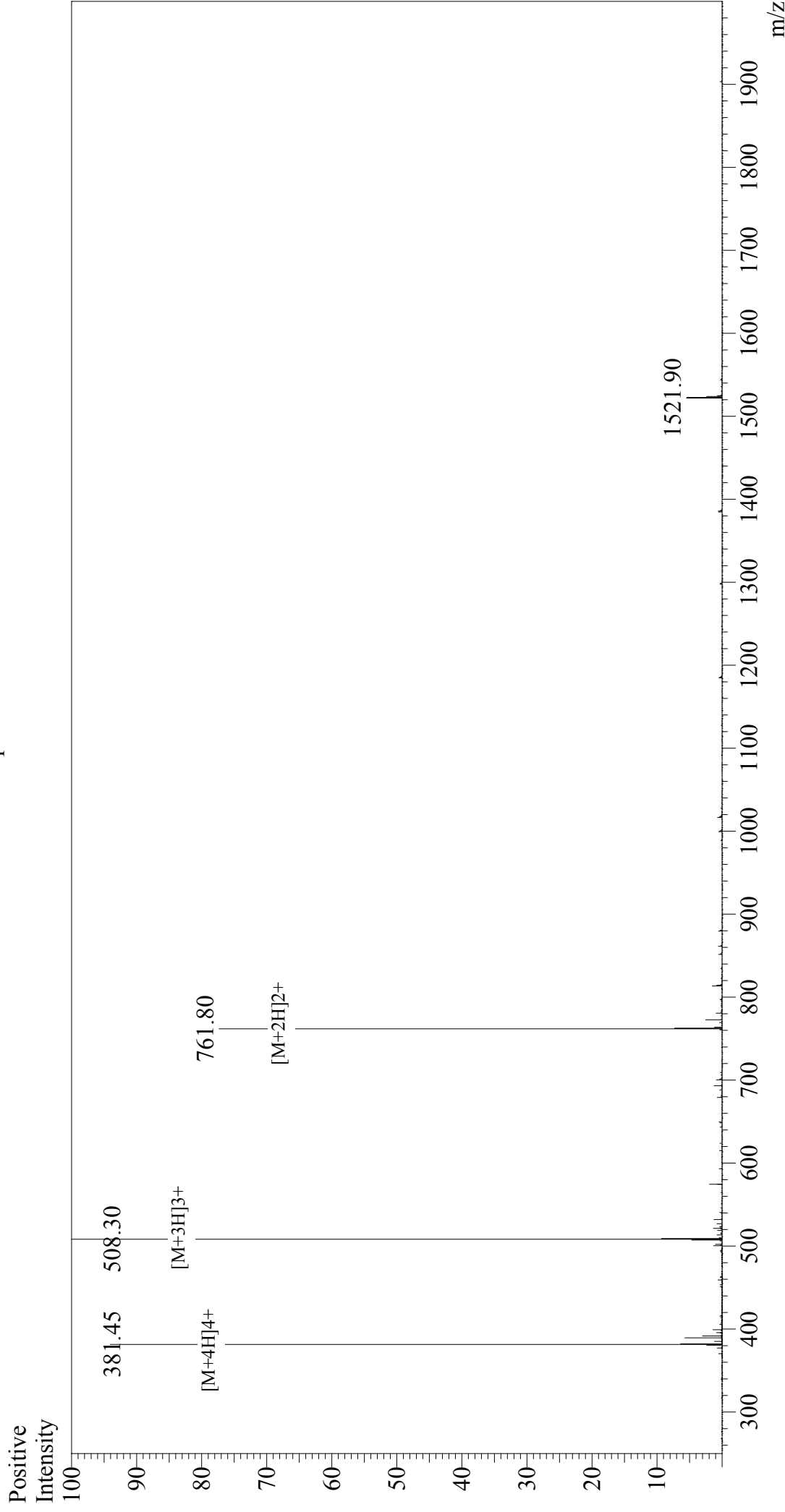


Mass Spectrum



Sample Information

Acquired by : Gary
 Month-Day Processed : 10/19/17
 Time Processed : 11:05:15
 Injection Volume : 0.2
 Sample Name : [Set¹⁴⁰]-Myelin Proteolipid Protein (139-151)
 Cat. No. : RP10550-0.5
 Lot. No. : PE6951710
 Theoretical MW : 1521.74
 Observed MW : 1521.90

Interface : ESI
 Nebulizing Gas Flow : 1.5L/min
 CDL Temp : 250°C
 Block Temp : 200°C
 Interface Bias : +4.5 kV
 Drying Gas Flow : 5 L/min
 T.Flow : 0.2 ml/min
 B.conc : 50%H₂O/50%MeOH