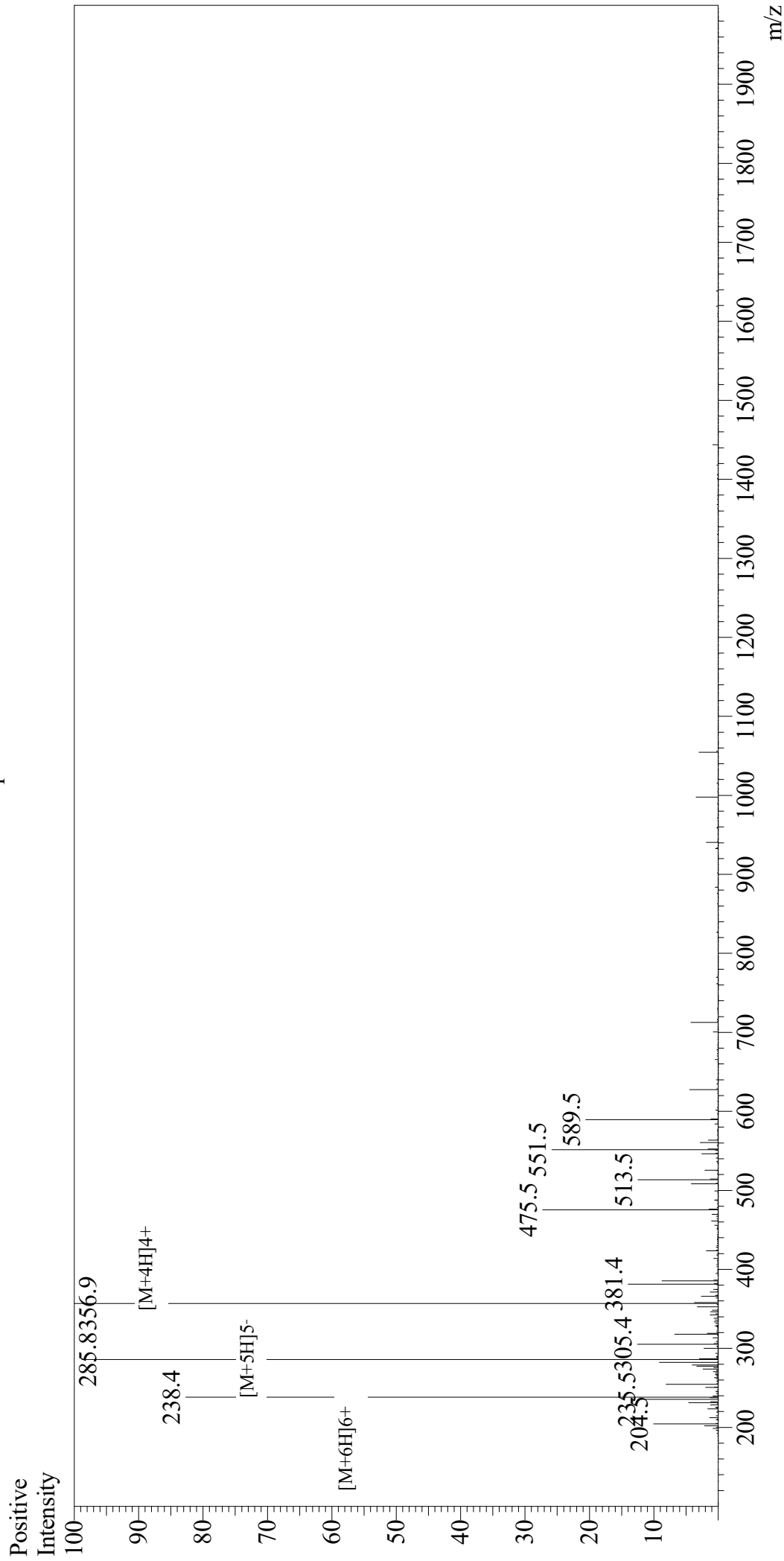


Mass Spectrum



Sample Information

User : Gary
 Month-Day Processed : 03/02/19
 Time Processed : 04:29:50 PM
 Injection Volume : 0.3
 Sample Name : (Arg)9
 Cat No. : RP20403
 Lot No. : PE8851902
 Theoretical MW : 1423.70
 Observed MW : 1423.6

Interface : ESI
 Nebulizing Gas Flow : 1.5L/min
 CDL Temp : 250
 Block Temp : 200

Equipment : GK11010007
 Interface Bias : +4.5kV
 Drying Gas Flow : 5 L/min
 T.Flow : 0.2ml/min
 B.conc : 50%H2O/50%MeOH