

Sample Name :β-Amyloid (1-42), rat  
 Cat. No. :RP10013  
 Lot. No. :PE6141704

Pump A : 0.065% trifluoroacetic in 100% water (v/v)  
 Pump B : 0.05% trifluoroacetic in 100% acetonitrile (v/v)  
 Total Flow:1 ml/min  
 Wavelength:220 nm

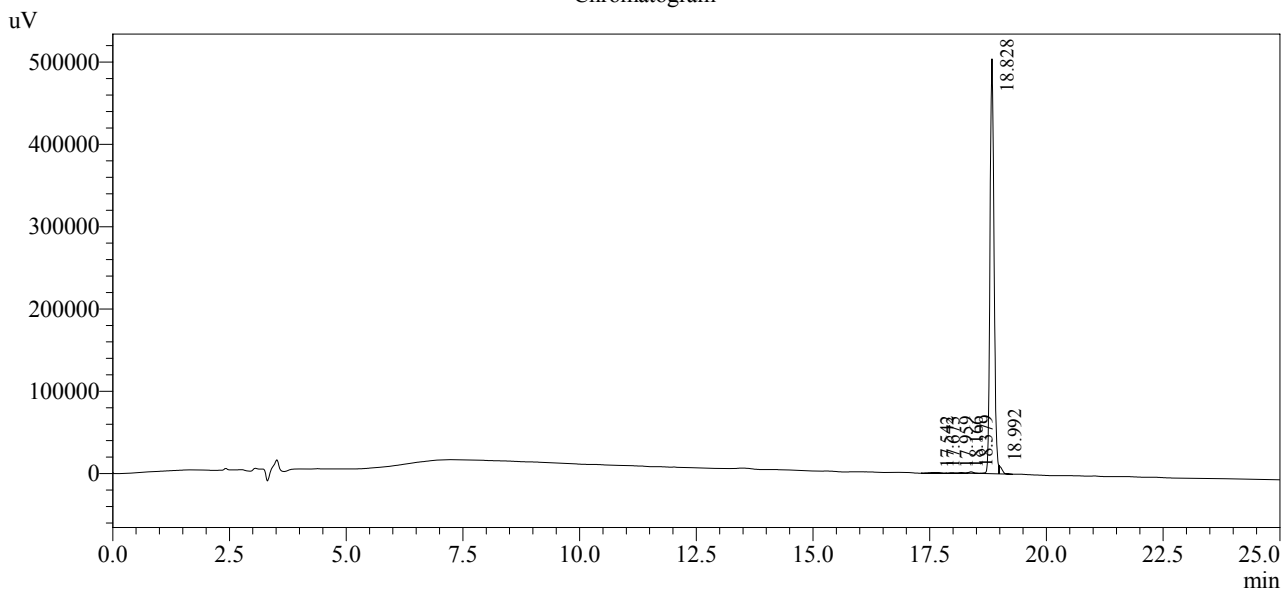
| Time  | Unit       | Command      | Value | Comment |
|-------|------------|--------------|-------|---------|
| 0.01  | Pumps      | Pump B Conc. | 5     |         |
| 25.00 | Pumps      | Pump B Conc. | 65    |         |
| 25.01 | Pumps      | Pump B Conc. | 95    |         |
| 31.00 | Pumps      | Pump B Conc. | 95    |         |
| 31.01 | Pumps      | Pump B Conc. | 5     |         |
| 40.00 | Pumps      | Pump B Conc. | 5     |         |
| 40.01 | Controller | Stop         |       |         |

<<Column Performance>>

<Detector A>

Column : Alltima™ C18 4.6 x 250 mm

Chromatogram



1 Det.A Ch1 / 220nm

Peak Table

Detector A Ch1 220nm

| Peak# | Ret. Time | Area    | Height | Area %  |
|-------|-----------|---------|--------|---------|
| 1     | 17.542    | 5073    | 559    | 0.163   |
| 2     | 17.673    | 5618    | 647    | 0.180   |
| 3     | 17.959    | 3879    | 471    | 0.125   |
| 4     | 18.166    | 5049    | 668    | 0.162   |
| 5     | 18.379    | 14562   | 1823   | 0.468   |
| 6     | 18.828    | 3038765 | 504076 | 97.602  |
| 7     | 18.992    | 40484   | 9503   | 1.300   |
| Total |           | 3113430 | 517747 | 100.000 |