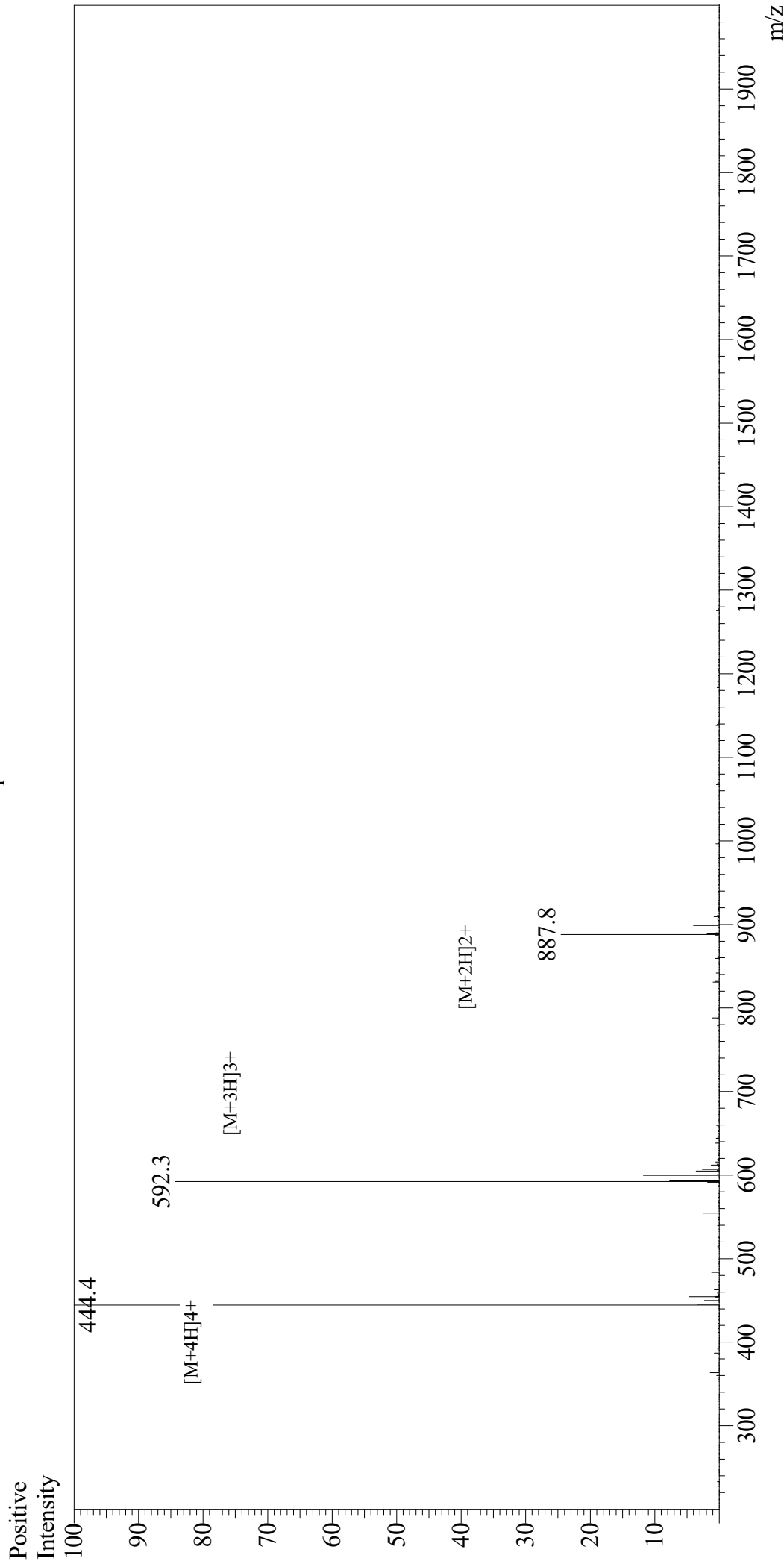


Mass Spectrum



Sample Information

User : Gary
Month-Day Processed : 01/09/20
Time Processed : 06:25:40 PM
Injection Volume : 0.3
Sample Name : OVA Peptide (323-339)
Cat No. : RP10610
Lot No. : E5559220A
Theoretical MW : 1773.91
Observed MW : 1773.91

Interface : ESI
Nebulizing Gas Flow : 1.5L/min
CDL Temp : 250
Block Temp : 200

Equipment : GK11010007
Interface Bias : +4.5kV
Drying Gas Flow : 5 L/min
T.Flow : 0.2ml/min
B.conc : 50%H2O/50%MeOH