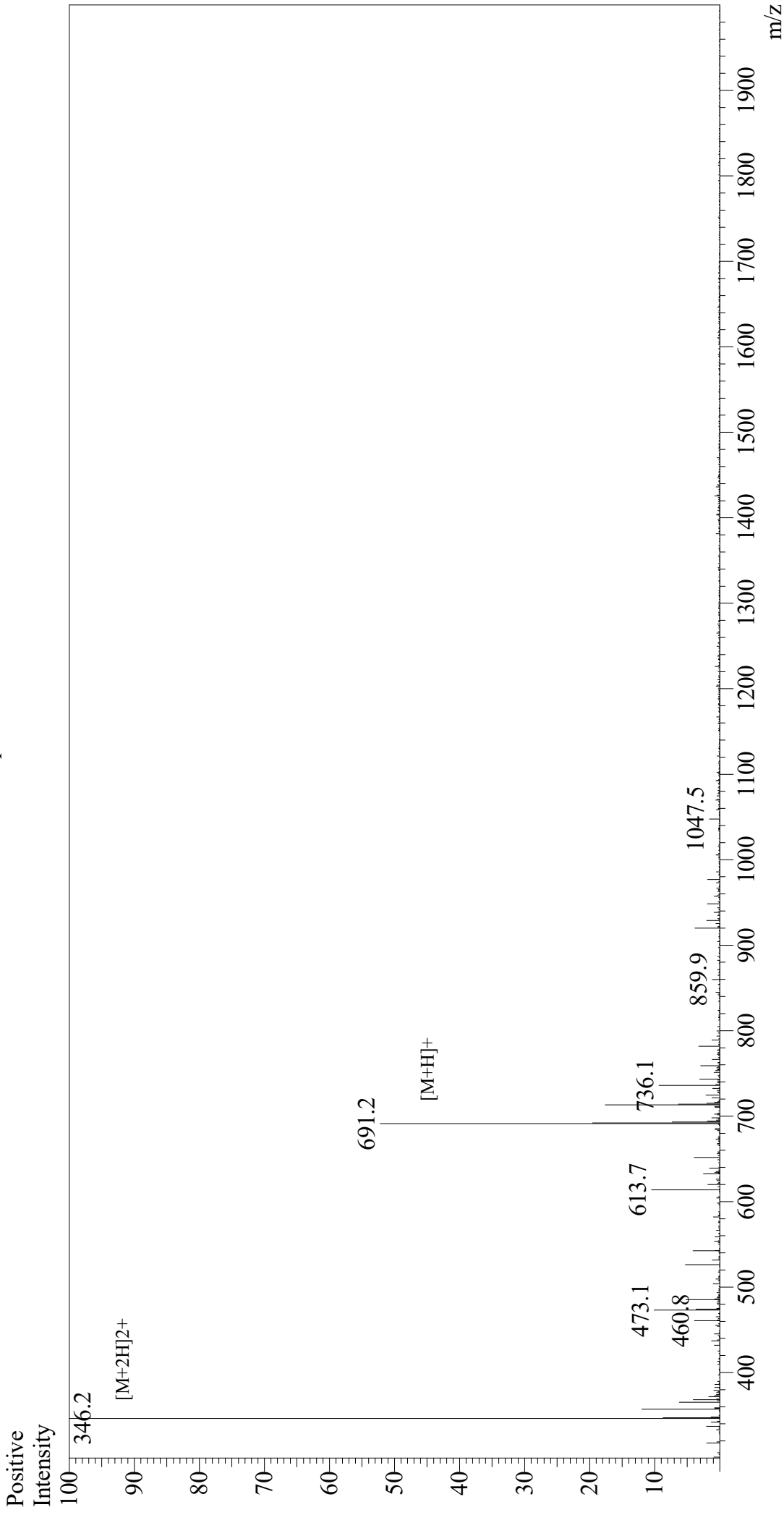


Mass Spectrum



Sample Information

Month-Day Processed : 11/01/20
Time Processed : 11:41:33 PM
Injection Volume : 0.4
Sample Name : GRGDSPC
Cat No : RP2083
Lot No : E8975220J
Theoretical MW : 689.73
Observed MW : 690.4

Interface : ESI
Nebulizing Gas Flow : 1.5L/min
CDL Temp : 250
Block Temp : 200

Equipment : GK11010007
Interface Bias : +4.5 kV
Drying Gas Flow : 5 L/min
T.Flow : 0.2 ml/min
B.conc : 50% H₂O/50% MeOH