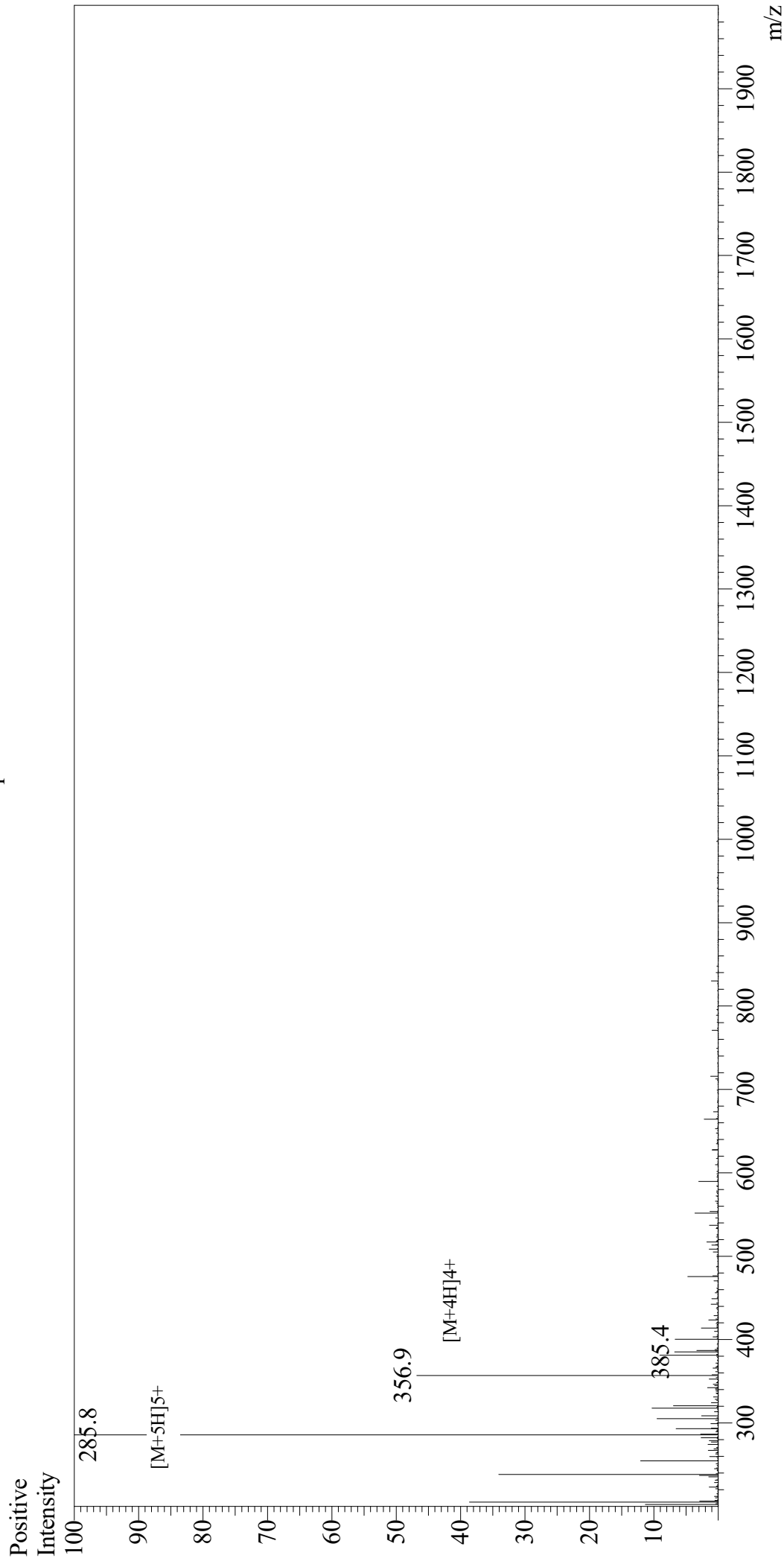


Mass Spectrum



Sample Information

User : Gary
Month-Day Processed : 11/30/18
Time Processed : 05:02:20 PM
Injection Volume : 0.1
Sample Name : (Arg)9
Cat No. : RP20403
Lot No. : PE6231811
Theoretical MW : 1423.70
Observed MW : 1424.0

Interface : ESI
Nebulizing Gas Flow : 1.5L/min
CDL Temp : 250
Block Temp : 200

Equipment : GK11010007
Interface Bias : +4.5kV
Drying Gas Flow : 5 L/min
T.Flow : 0.2ml/min
B.conc : 50%H2O/50%MeOH