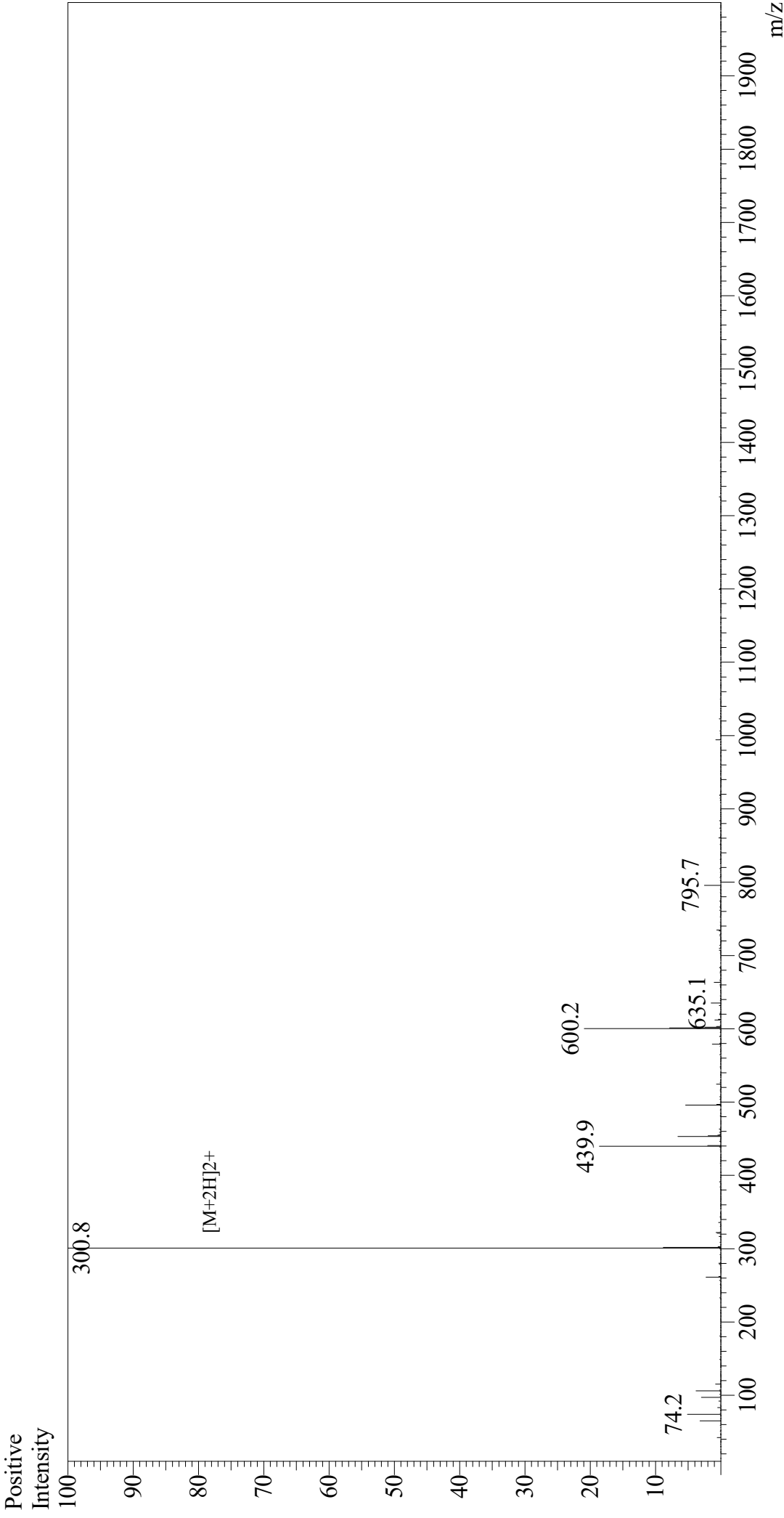


Mass Spectrum



Sample Information

Acquired by : Gary
Month-Day Processed : 09/21/19
Time Processed : 05:36:27 PM
Injection Volume : 0.3
Sample Name : Phe-Met-Arg-Phe
Cat. No. : RP10814
Lot. No. : E4779619I
Theoretical MW : 599.80
Observed MW : 599.6

Interface : ESI
Nebulizing Gas Flow : 1.5L/min
CDL Temp : 250
Block Temp : 200

Equipment : GK11010007
Interface Bias : +4.5 kV
Drying Gas Flow : 5 L/min
T.Flow : 0.2 ml/min
B.conc : 50%H2O/50%MeOH