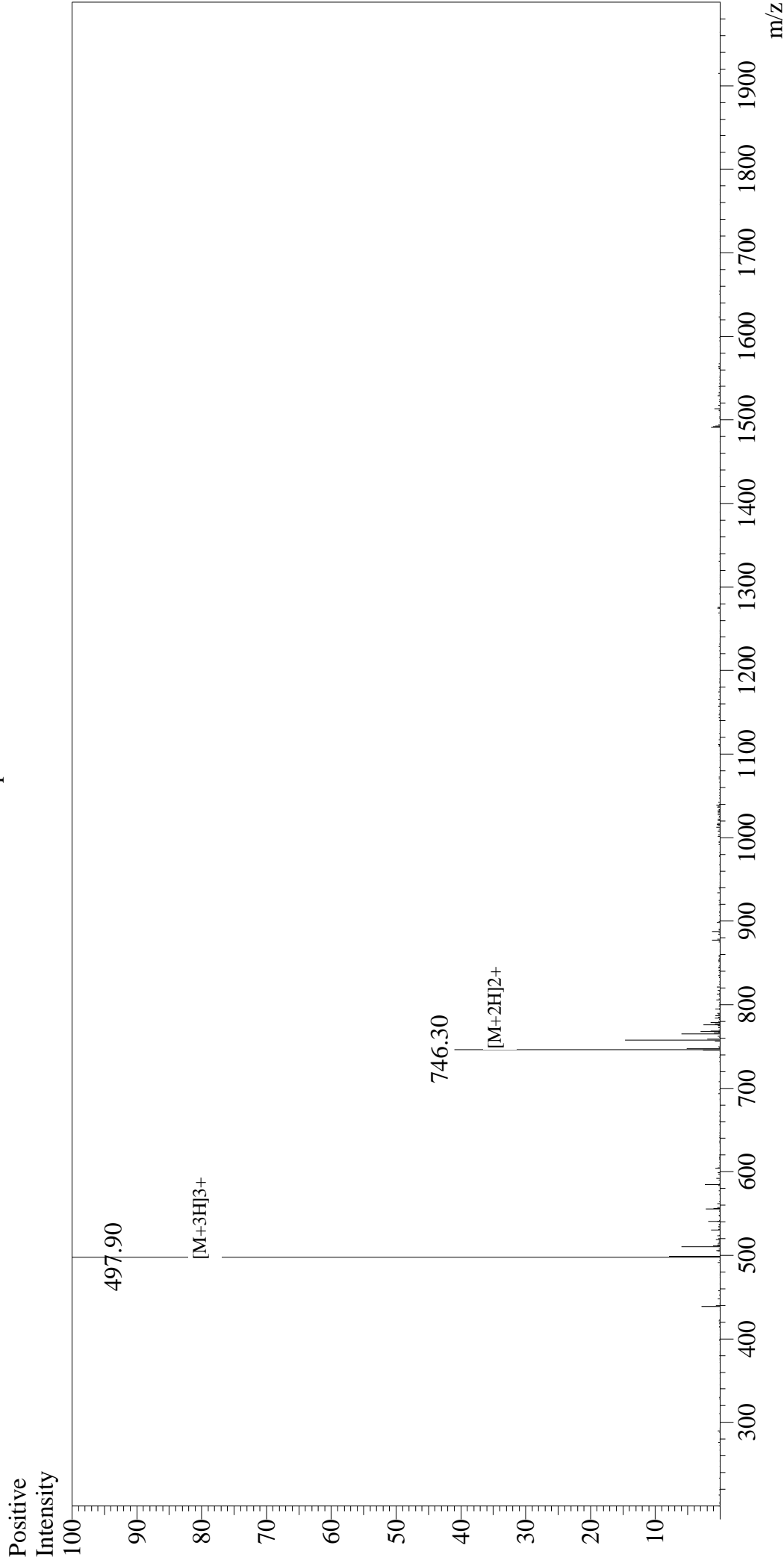


Mass Spectrum



Sample Information

User : Gary
Month-Day Processed : 10/26/16
Time Processed : 14:28:33
Injection Volume : 0.2
Sample Name : SV40 T-Ag-derived NLS peptide
Cat No. : RP20513
Lot No. : PE1881610
Theoretical MW : 1490.80
Observed MW : 1490.70

Interface : ESI
Nebulizing Gas Flow : 1.5L/min
CDL Temp : 250°C
Block Temp : 200°C

Interface Bias : +4.5kV
Drying Gas Flow : 5 L/min
T.Flow : 0.2ml/min
B.conc : 50%H2O/50%MeOH