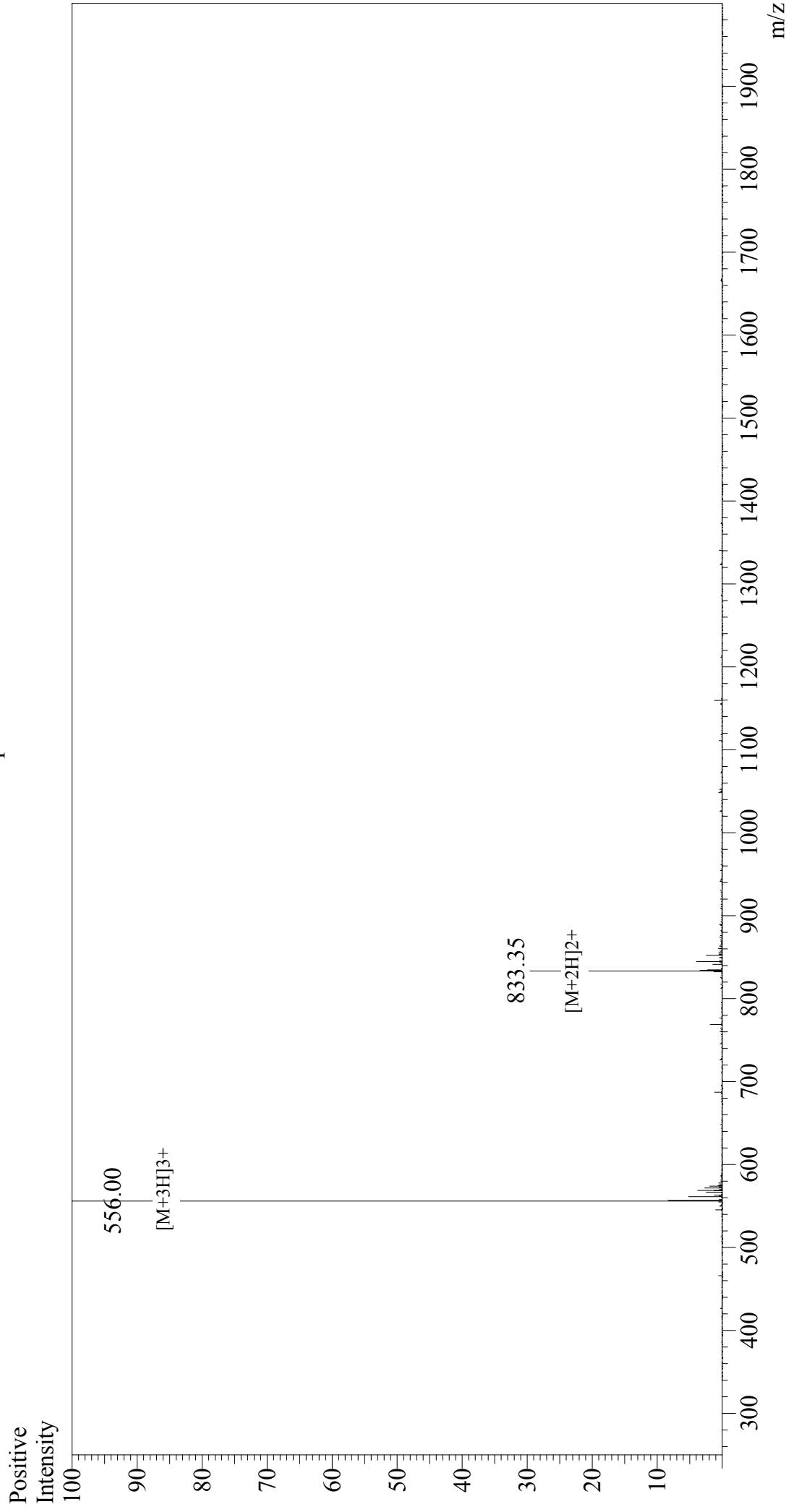


Mass Spectrum



Sample Information

Acquired by : Gary
Month-Day Processed : 12/16/17
Time Processed : 8:38:09
Injection Volume : 0.2
Sample Name : α -MSH, amide
Cat. No. : RP10644
Lot. No. : PE6581712
Theoretical MW : 1664.90
Observed MW : 1665.00

Interface

Interface : ESI
Nebulizing Gas Flow : 1.5L/min
CDL Temp : 250°C
Block Temp : 200°C

Interface Bias

Interface Bias : +4.5 kV
Drying Gas Flow : 5 L/min
T.Flow : 0.2 ml/min
B.conc : 50% H₂O/50% MeOH