

Sample Name : Glucagon-Like Peptide (GLP) I (7-36), amide, human  
 Cat. No. : RP10773-0.5  
 Lot. No. : PE4281811  
 Time Processed : 9:29:05  
 Month-Day-Year Processed : 11/17/2018

Pump A : 0.065% trifluoroacetic in 100% water (v/v)  
 Pump B : 0.05% trifluoroacetic in 100% acetonitrile (v/v)  
 Total Flow: 1 ml/min  
 Wavelength: 220 nm

Time	Unit	Command	Value	Comment
0.01	Pumps	Pump A B.Conc	5	
10.00	Pumps	Pump A B.Conc	35	
35.00	Pumps	Pump A B.Conc	95	
41.00	Pumps	Pump A B.Conc	95	
41.01	Pumps	Pump A B.Conc	5	
50.00	Pumps	Pump A B.Conc	5	
50.01	Controller	Stop		

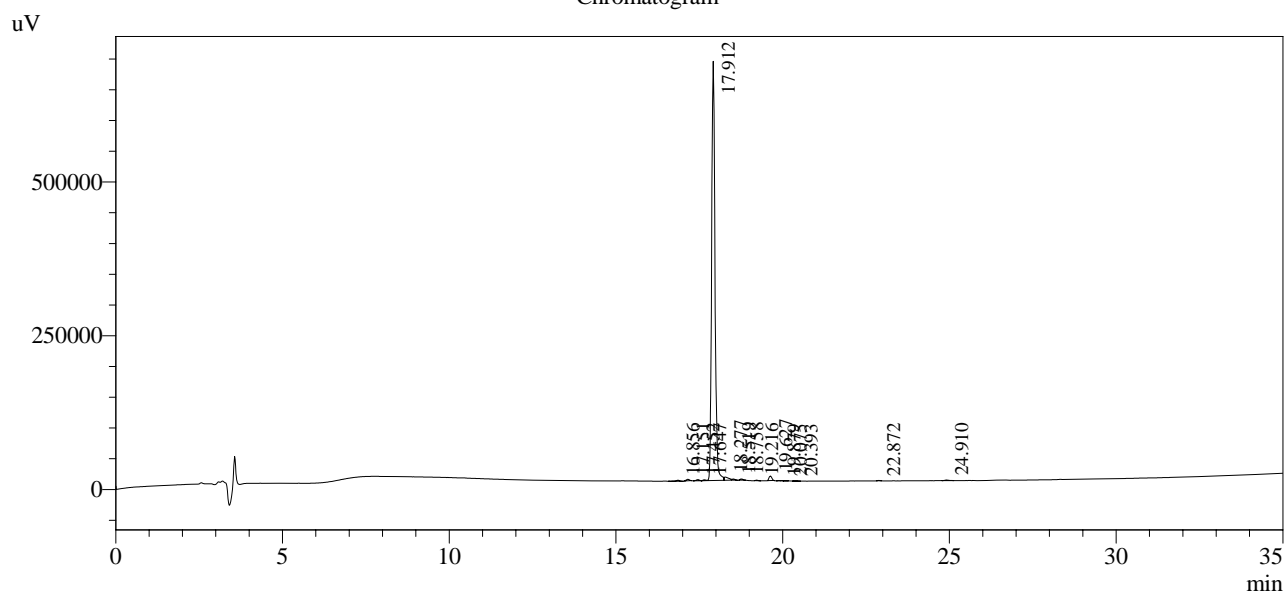
<<Column Performance>>

<Detector A>

Column : Inertsil ODS-3 4.6 x 250 mm

Equipment: GK11010009

Chromatogram



1 Det.A Ch1 / 220nm

Peak Table

Detector A Ch1 220nm

Peak#	Ret. Time	Area	Height	Area %
1	16.856	13486	1670	0.271
2	17.151	14352	2378	0.288
3	17.452	11152	1824	0.224
4	17.647	8350	1423	0.168
5	17.912	4793425	681756	96.353
6	18.277	48667	5145	0.978
7	18.519	10658	1833	0.214
8	18.758	11167	1920	0.224
9	19.216	4730	907	0.095
10	19.627	42541	7401	0.855
11	19.879	1254	308	0.025
12	20.075	2496	526	0.050
13	20.393	2889	406	0.058
14	22.872	2345	469	0.047
15	24.910	7363	908	0.148
Total		4974876	708876	100.000