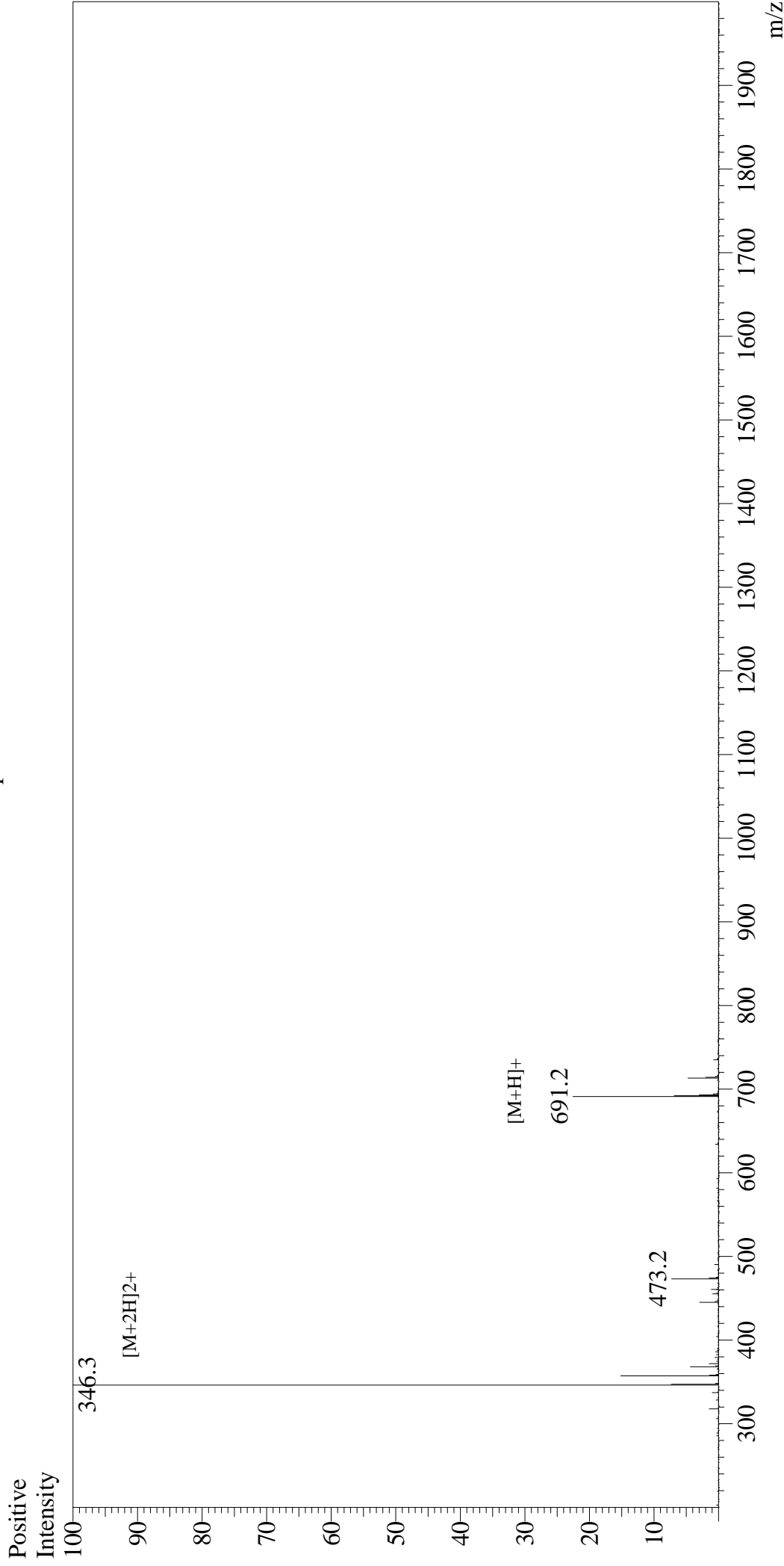


# Mass Spectrum



## Sample Information

User : Gary  
Month-Day Processed : 03/27/20  
Time Processed : 12:21:17  
Injection Volume : 0.3  
Sample Name : GRGDSPC  
Cat No. : RP20283  
Lot No. : E6026520C  
Theoretical MW : 690.73  
Observed MW : 690.6

Interface : ESI  
Nebulizing Gas Flow : 1.5L/min  
CDL Temp : 250  
Block Temp : 200

Equipment : GK11010007  
Interface Bias : +4.5kV  
Drying Gas Flow : 5 L/min  
T.Flow : 0.2ml/min  
B.conc : 50%H2O/50%MeOH