

Sample Name :Atrial Natriuretic Peptide (ANP) (1-28), rat
 Cat No. :RP11195
 Lot No. :E1549921G
 Time Processed : 10:23:27 AM
 Month-Day-Year Processed : 07/20/2021

Pump A : 0.065% trifluoroacetic in 100% water (v/v)
 Pump B : 0.05% trifluoroacetic in 100% acetonitrile (v/v)
 Total Flow:1 ml/min
 Wavelength:220 nm

| Time | Module | Command | Value |
|-------|------------|---------|-------|
| 0.01 | Pumps | B.Conc | 5 |
| 25.00 | Pumps | B.Conc | 65 |
| 25.01 | Pumps | B.Conc | 95 |
| 31.00 | Pumps | B.Conc | 95 |
| 31.01 | Pumps | B.Conc | 5 |
| 40.00 | Pumps | B.Conc | 5 |
| 40.00 | Controller | Stop | |

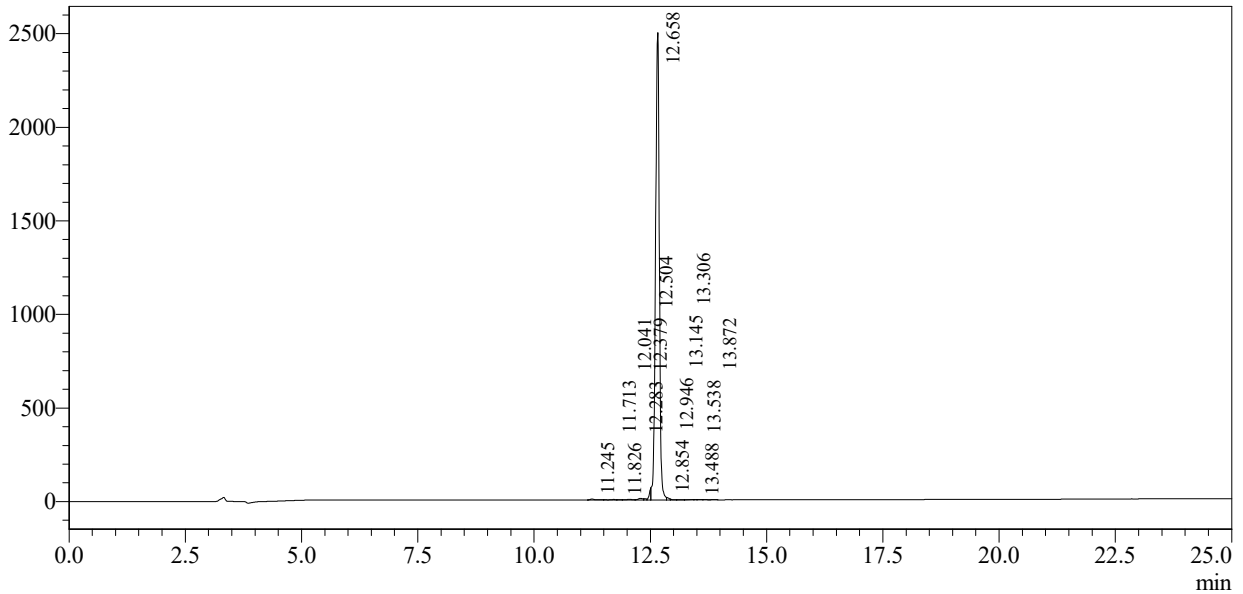
<<Column Performance>>

<Detector A>

Column : Inertsil ODS-3 4.6 x 250 mm

Equipment: GK11010017

mV



1 Detector A Channel 1 / 220nm

Peak Table

Detector A Channel 1 220nm

| Peak# | Ret. Time | Area | Height | Area % |
|-------|-----------|----------|---------|---------|
| 1 | 11.245 | 31834 | 4637 | 0.218 |
| 2 | 11.713 | 16008 | 2274 | 0.110 |
| 3 | 11.826 | 6203 | 1120 | 0.043 |
| 4 | 12.041 | 25923 | 2851 | 0.178 |
| 5 | 12.283 | 55799 | 7857 | 0.383 |
| 6 | 12.379 | 21697 | 5705 | 0.149 |
| 7 | 12.504 | 143167 | 57238 | 0.982 |
| 8 | 12.658 | 14197716 | 2496364 | 97.350 |
| 9 | 12.854 | 40873 | 13313 | 0.280 |
| 10 | 12.946 | 9958 | 2860 | 0.068 |
| 11 | 13.145 | 11063 | 1657 | 0.076 |
| 12 | 13.306 | 10732 | 1608 | 0.074 |
| 13 | 13.488 | 1748 | 533 | 0.012 |
| 14 | 13.538 | 7073 | 1442 | 0.048 |
| 15 | 13.872 | 4379 | 794 | 0.030 |
| Total | | 14584174 | 2600253 | 100.000 |