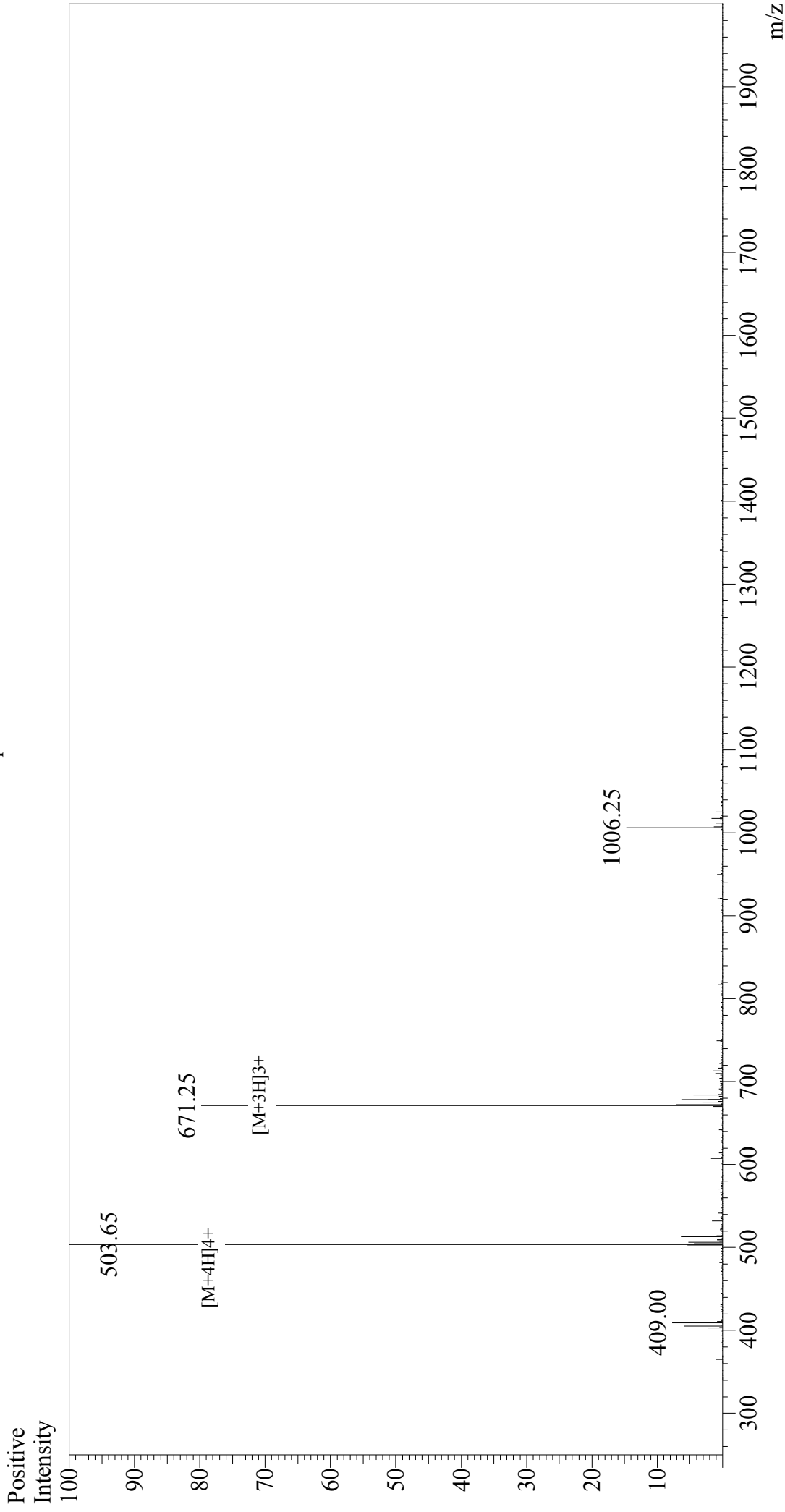


Mass Spectrum



Sample Information

Acquired by : Gary
Month-Day Processed : 02/26/18
Time Processed : 9:08:01
Injection Volume : 0.2
Sample Name : Systemin
Cat. No. : RP10622
Lot. No. : PE1811802
Theoretical MW : 2010.30
Observed MW : 2010.60

Interface : ESI
Nebulizing Gas Flow : 1.5L/min
CDL Temp : 250°C
Block Temp : 200°C

Interface Bias : +4.5 kV
Drying Gas Flow : 5 L/min
T.Flow : 0.2 ml/min
B.conc : 50%H2O/50%MeOH