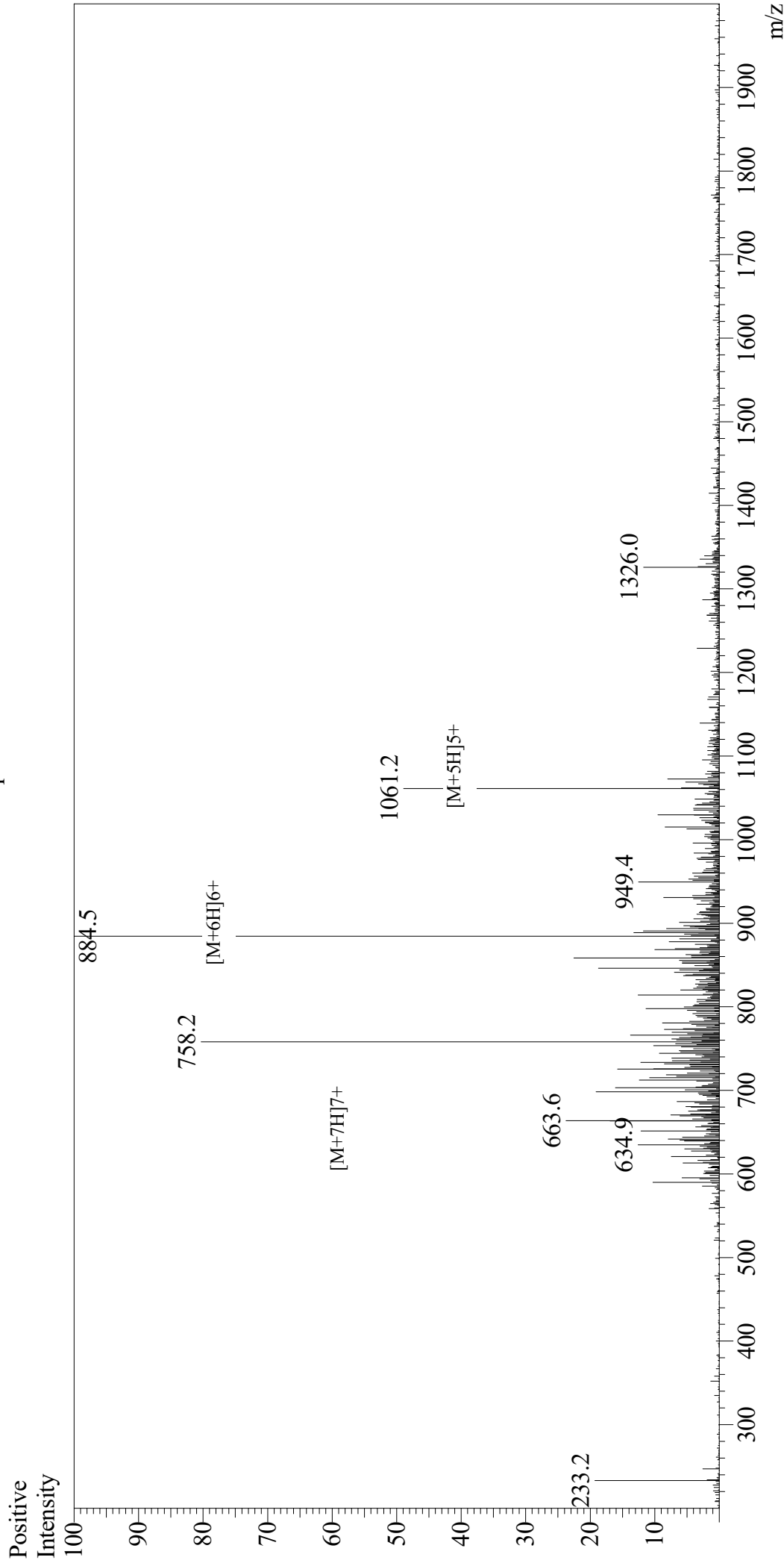


Mass Spectrum



Sample Information

User : Gary
Month-Day Processed : 09/19/19
Time Processed : 10:17:00 AM
Injection Volume : 0.3
Sample Name : Calmodulin Binding Peptide 1
Cat No. : RP13247
Lot No. : E4883819I
Theoretical MW : 5301.01
Observed MW : 5301.0

Interface : ESI
Nebulizing Gas Flow : 1.5L/min
CDL Temp : 250
Block Temp : 200

Equipment : GK11010007
Interface Bias : +4.5kV
Drying Gas Flow : 5 L/min
T.Flow : 0.2ml/min
B.conc : 50%H₂O/50%MeOH