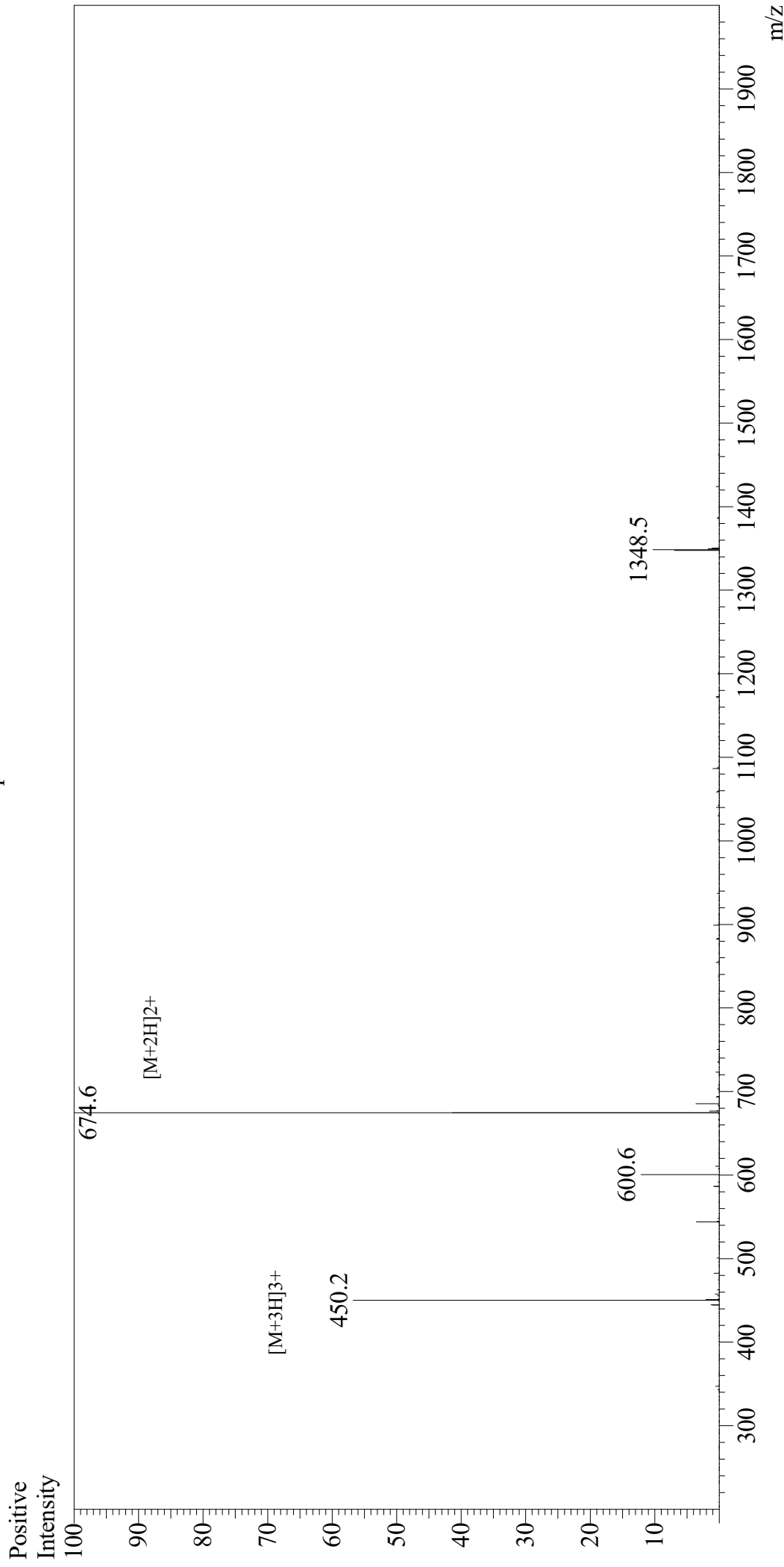


Mass Spectrum



Sample Information

User : Gary
Month-Day Processed : 02/19/20
Time Processed : 04:00:56 PM
Injection Volume : 0.3
Sample Name : Substance P
Cat No. : RP10178
Lot No. : E9488820B
Theoretical MW : 1347.63
Observed MW : 1347.2

Interface : ESI
Nebulizing Gas Flow : 1.5L/min
CDL Temp : 250
Block Temp : 200

Equipment : GK11010007
Interface Bias : +4.5kV
Drying Gas Flow : 5 L/min
T.Flow : 0.2ml/min
B.conc : 50%H2O/50%MeOH