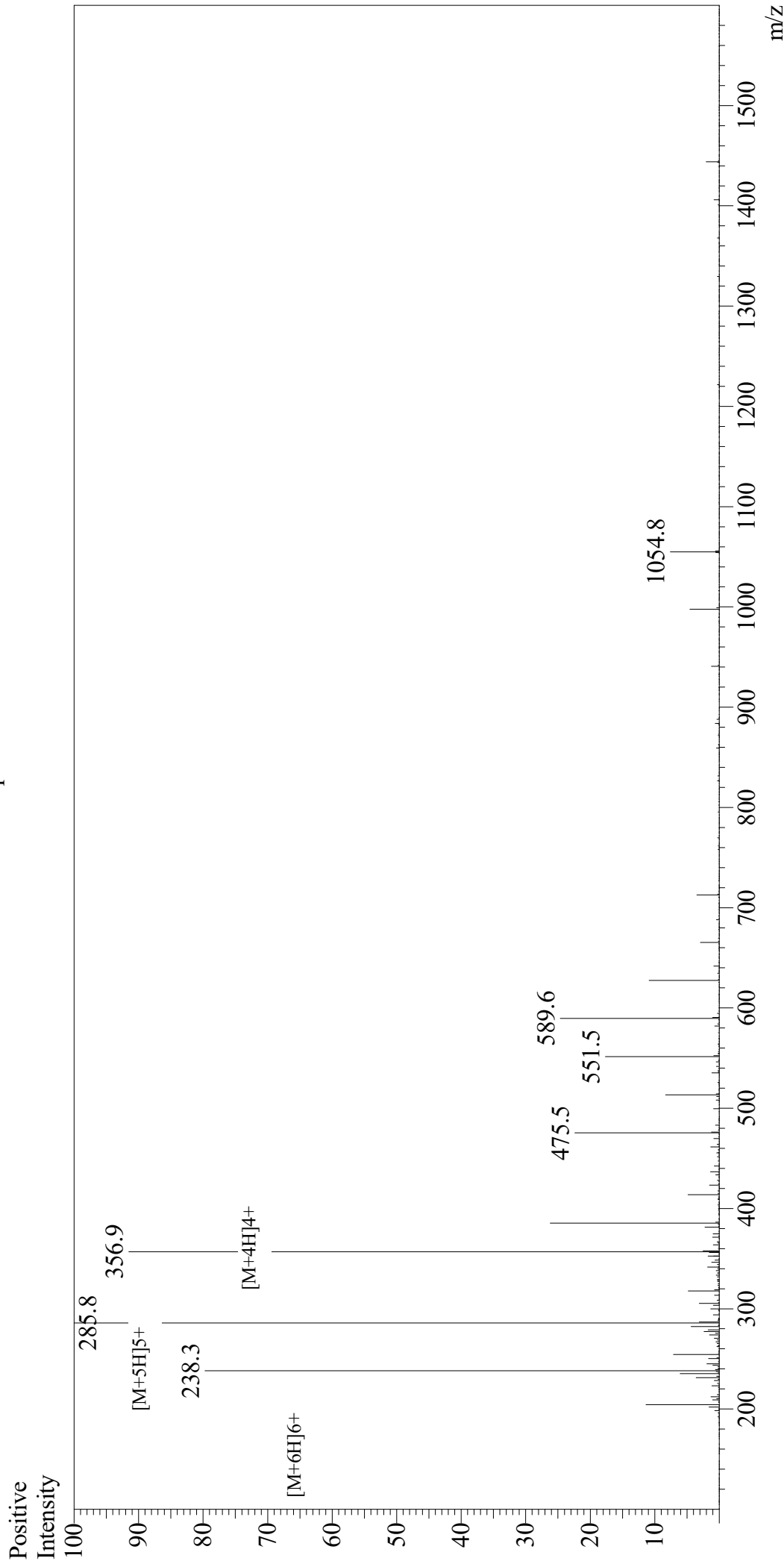


# Mass Spectrum



## Sample Information

User : Gary  
Month-Day Processed : 09/19/19  
Time Processed : 11:04:57 AM  
Injection Volume : 0.6  
Sample Name : (Arg)9  
Cat No. : RP20403  
Lot No. : E4942619I  
Theoretical MW : 1423.70  
Observed MW : 1424.0

## Interface

Interface : ESI  
Nebulizing Gas Flow : 1.5L/min  
CDL Temp : 250  
Block Temp : 200

## Equipment

Equipment : GK11010007  
Interface Bias : +4.5kV  
Drying Gas Flow : 5 L/min  
T.Flow : 0.2ml/min  
B.conc : 50%H2O/50%MeOH