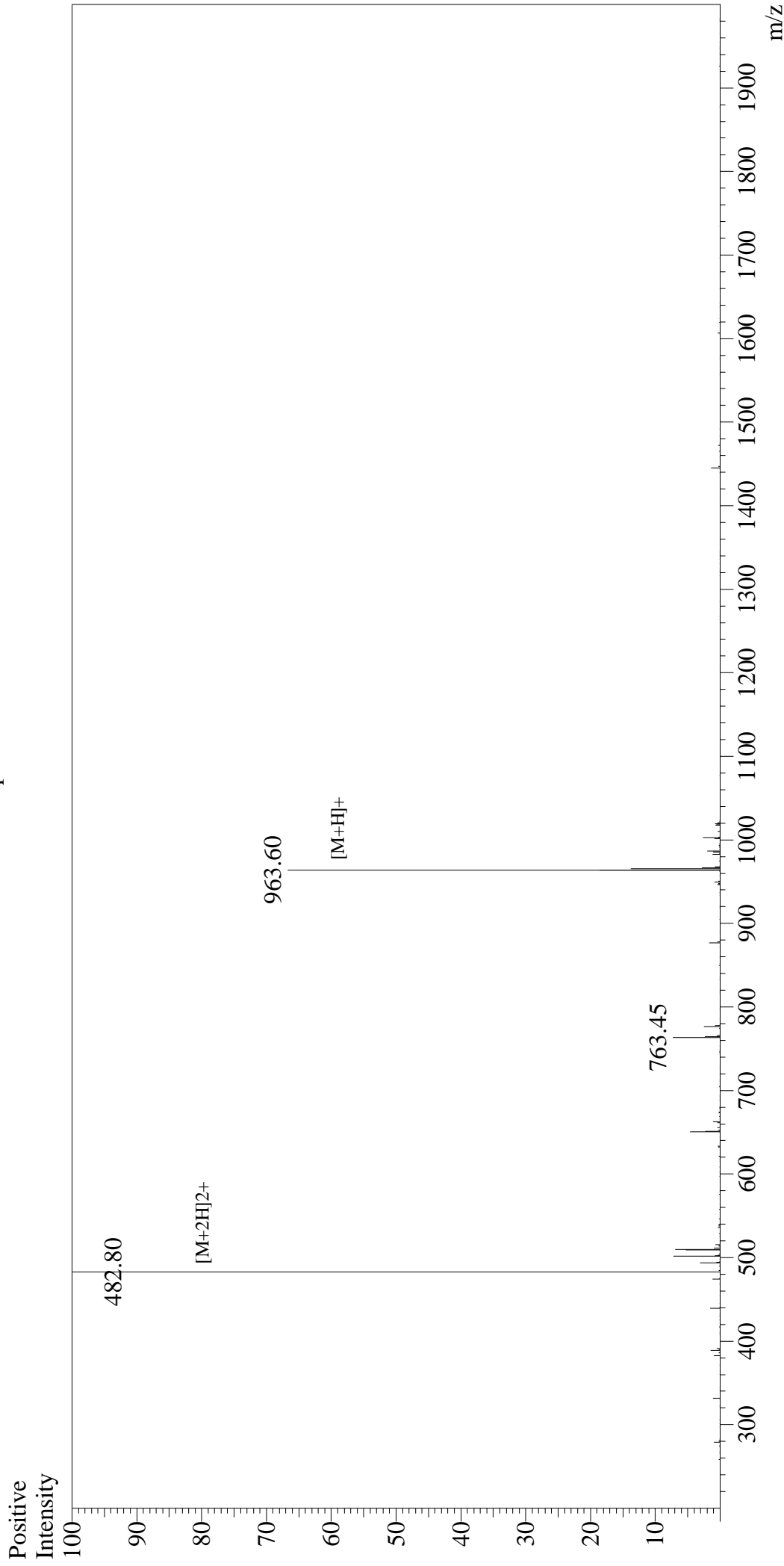


Mass Spectrum



Sample Information

User : Gary
Month-Day Processed : 12/08/16
Time Processed : 14:35:26
Injection Volume : 0.2
Sample Name : OVA Peptide (257-264)
Cat No. : RPI0611
Lot No. : PE4721612
Theoretical MW : 963.13
Observed MW : 963.60

Interface : ESI
Nebulizing Gas Flow : 1.5L/min
CDL Temp : 250°C
Block Temp : 200°C

Interface Bias : +4.5kV
Drying Gas Flow : 5 L/min
T.Flow : 0.2ml/min
B.conc : 50%H2O/50%MeOH