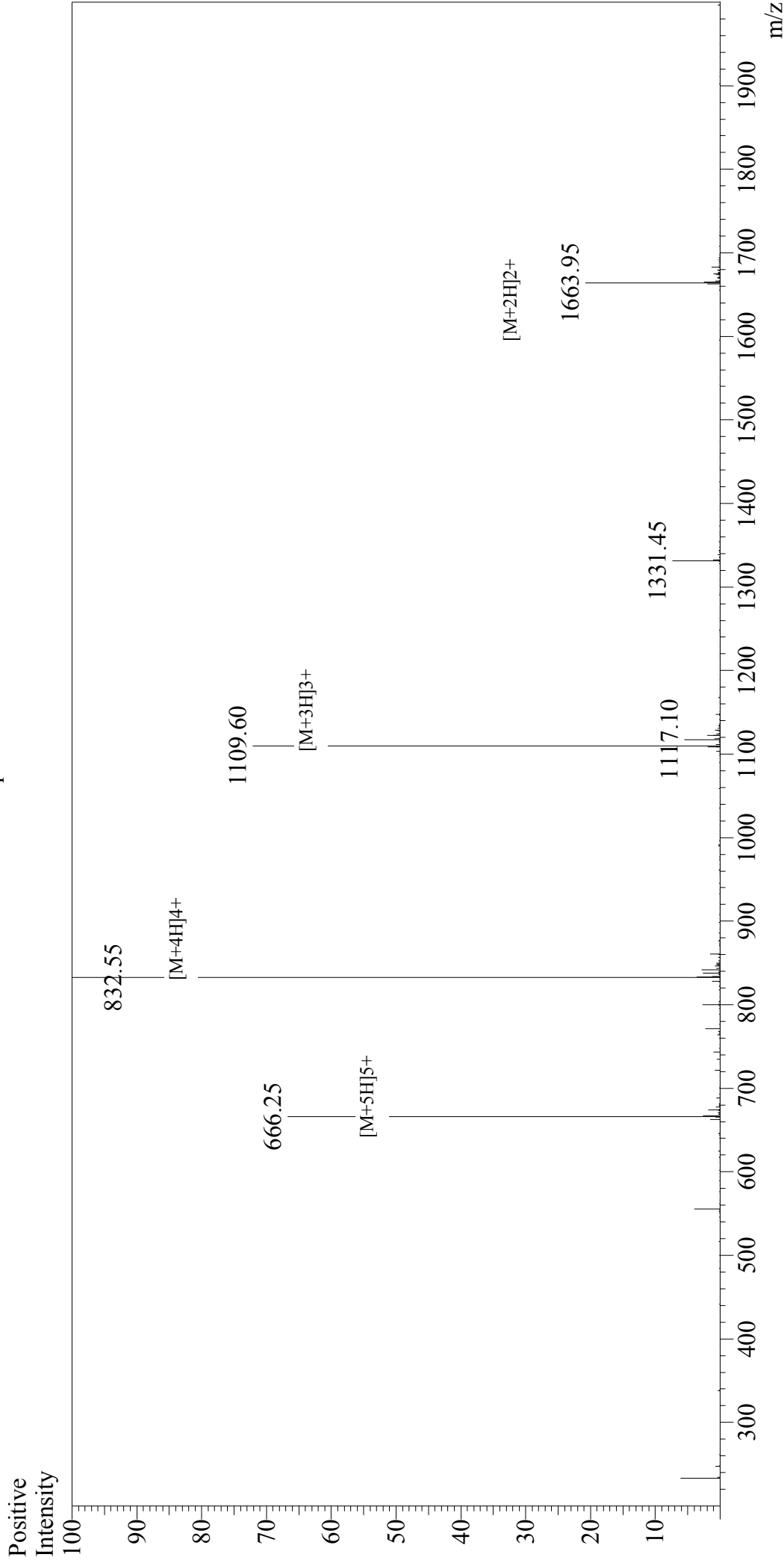


# Mass Spectrum



## Sample Information

User : Gary  
Month-Day Processed : 06/14/17  
Time Processed : 7:35:51  
Injection Volume : 0.2  
Sample Name : VIP, human, ovine, porcine, rat  
Cat No. : RPI0085  
Lot No. : 16018007590016/PE3020  
Theoretical MW : 3325.80  
Observed MW : 3326.20

Interface : ESI  
Nebulizing Gas Flow : 1.5L/min  
CDL Temp : 250°C  
Block Temp : 200°C

Interface Bias : +4.5kV  
Drying Gas Flow : 5 L/min  
T.Flow : 0.2ml/min  
B.conc : 50%H2O/50%MeOH