

Sample Name :β-Amyloid (1-40), rat  
 Cat. No. :RP10016  
 Lot. No. :PE0701711

Pump A : 0.065% trifluoroacetic in 100% water (v/v)  
 Pump B : 0.05% trifluoroacetic in 100% acetonitrile (v/v)  
 Total Flow:1 ml/min  
 Wavelength:220 nm

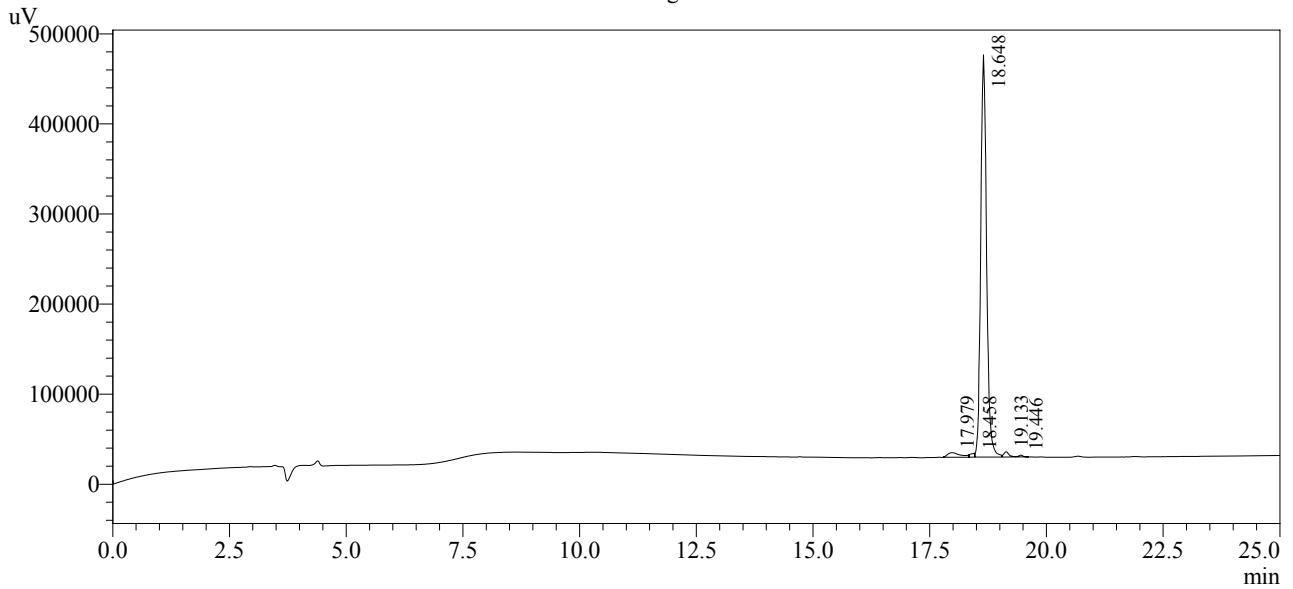
| Time  | Unit       | Command       | Value | Comment |
|-------|------------|---------------|-------|---------|
| 0.01  | Pumps      | Pump A B.Conc | 5     |         |
| 25.00 | Pumps      | Pump A B.Conc | 65    |         |
| 25.01 | Pumps      | Pump A B.Conc | 95    |         |
| 27.00 | Pumps      | Pump A B.Conc | 95    |         |
| 27.01 | Pumps      | Pump A B.Conc | 5     |         |
| 35.00 | Pumps      | Pump A B.Conc | 5     |         |
| 35.01 | Controller | Stop          |       |         |

<<Column Performance>>

<Detector A>

Column : Alltima™ C18 4.6 x 250 mm

Chromatogram



1 Det.A Ch1 / 220nm

Peak Table

Detector A Ch1 220nm

| Peak# | Ret. Time | Area    | Height | Area %  |
|-------|-----------|---------|--------|---------|
| 1     | 17.979    | 98228   | 5083   | 2.398   |
| 2     | 18.458    | 28159   | 4237   | 0.688   |
| 3     | 18.648    | 3912111 | 446626 | 95.521  |
| 4     | 19.133    | 45436   | 5740   | 1.109   |
| 5     | 19.446    | 11623   | 1937   | 0.284   |
| Total |           | 4095558 | 463623 | 100.000 |